

ARCHI- TECTURAL MUTATION

NICK ERVINCK

ARCHI- TECTURAL MUTATION

NICK ERVINCK



6



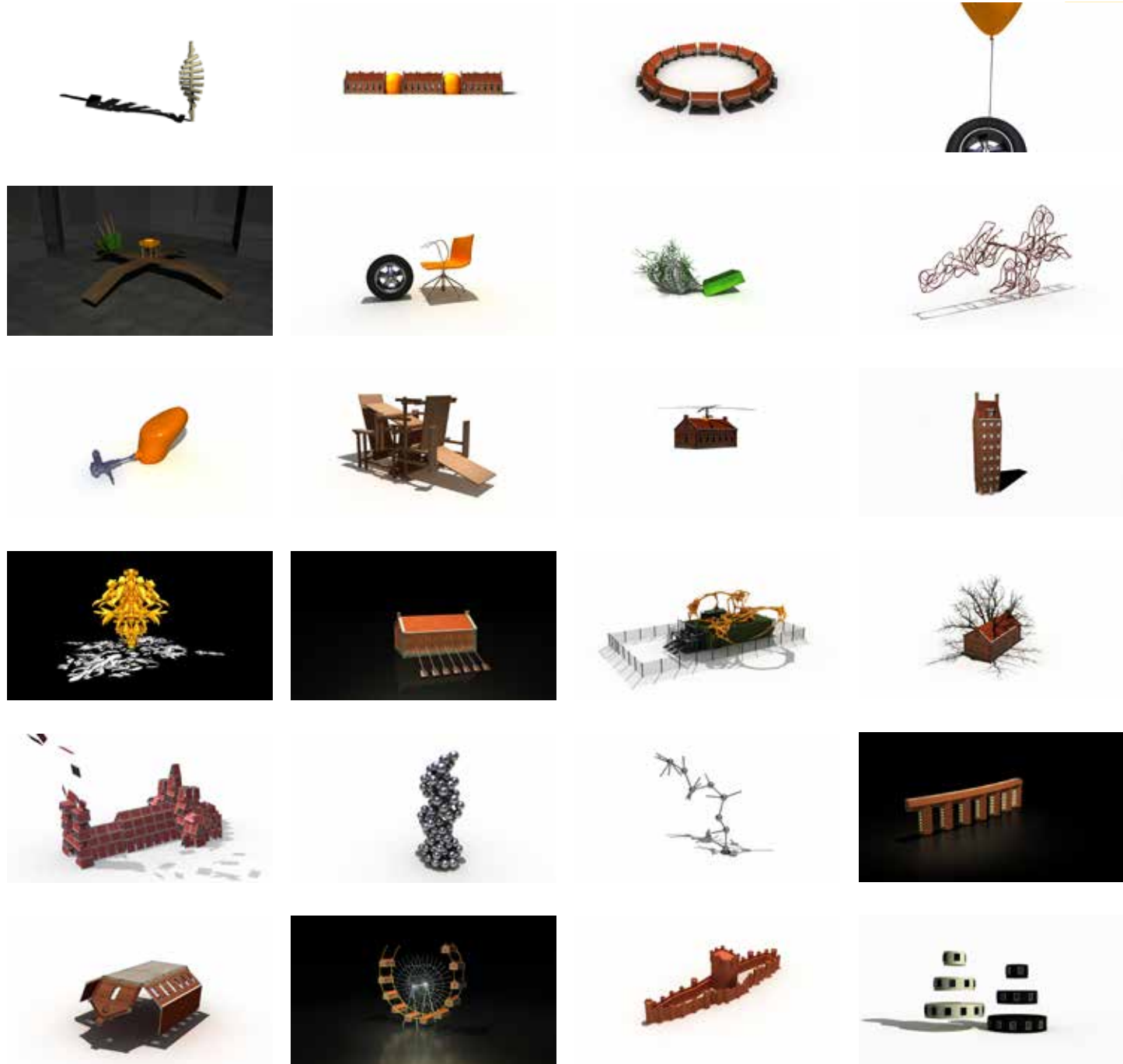
7

ARCHITECTURAL MUTATION

📌 **Nick Ervinck's architectural mutations are to be divided into two kinds. On the one hand, he tries to incorporate art in architecture; on the other, he brings architecture to art.**

TUOHREM is one of the first sort of architectural mutations. It is a courtyard specifically designed for the new retirement home in Meerhout, Belgium. In this way, Ervinck converts a piece of art into an integrated part of a building that exceeds the normal use of art. It is no longer purely visible and aesthetic. This proves that art can serve a much greater purpose than amaze the spectator. In addition to create a pleasant atmosphere and living environment, it can be used as an everyday functional object. Other examples are IMAGROD and ODETTE.

In the other line of architectural mutations, Ervinck uses architectural elements to create art rather than integrate art in architecture. From the simple brick stone cottage style to the classical Roman domus and even Christian superstructures like abbeys and cathedrals, there is little that remains untouched. Although, the original buildings can still be easily recognised, they started mutating beyond imagination and like this gained a life of their own. Some of them grew legs and started scuttling across the beach like crabs. Others got into a process of mitosis, divided and duplicated themselves and grew into grotesque constructions of got taken over by Ervinck's characteristic yellow blobs and took to the skies.

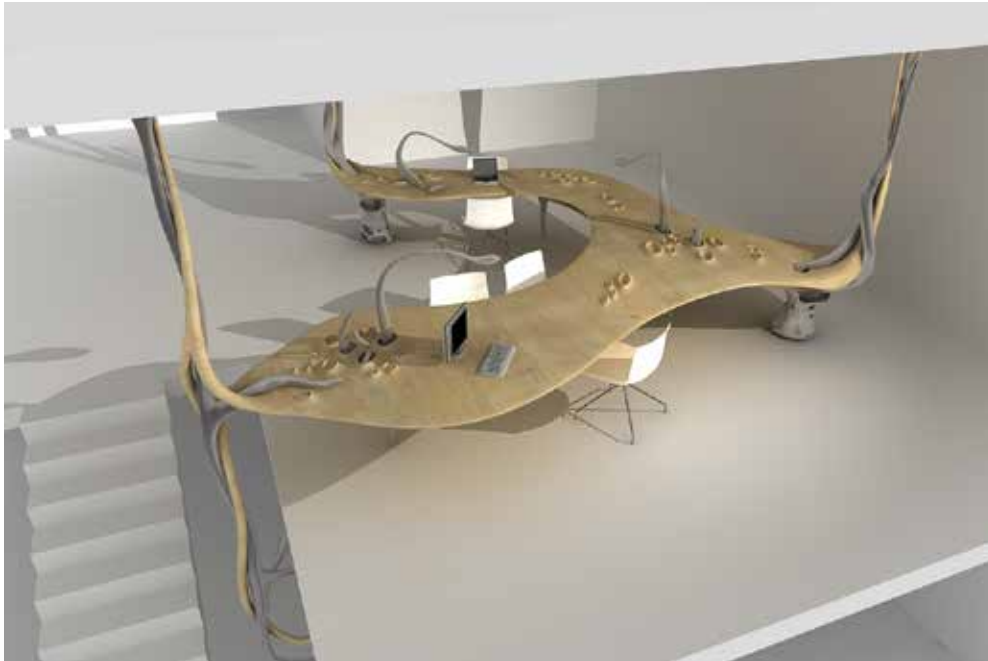


GNIA, 2007
3D animation
17'59"



IMAGROD, 2010 - 2012
polyester and polyurethane
600 x 400 x 300 cm
236.2 x 157.5 x 118.1 inches

location: MILHO - Oostende, BE



OB, 2010
study



SOLOKIOW, 2014
study



REKAMKEIZUM, 2009 - 2014
concrete, fabric, iron and wood
556 x 1394 x 1858 cm
219 x 549 x 731.5 inches
location: park Bel-Air - Willebroek, BE



12

SIUTLEPS, 2011 - 2013
polyester and polyurethane
230 x 420 x 300 cm
90.6 x 165.4 x 118.1 inches
location: De Brem - Oostende, BE



13

TOPPAL, 2014 - 2015
iron, polyester and polyurethane
467 x 990 x 620 cm
183.9 x 389.8 x 244.1 inches
location: WZC Meersminne - Mortsel, BE



TUOHREM, 2015
polyester, polyurethane and rubber
1100 x 1400 cm
433 x 551.2 inches

location: WZC De Berk - Meerhout, BE



TUOHREM

TUOHREM is specifically made by Nick Ervinck for the courtyard of the new retirement home in Meerhout, Belgium.

At this courtyard, the inhabitants seem to dwell in an enormous painting. TUOHREM is in fact like a 'floorpainting' that spreads to all corners of the square. Nick Ervinck integrates the benches in a unity of flowing, organic colored patches. This unique visual language reminds us of a pebble that creates a series of waves in the surface of the water. Such a dynamic, digitally designed structure entails a certain energy, that encourages the inhabitants to continuously rediscover the courtyard, and to look at it in a different way over and over again. Furthermore, by using a soft floor, this work of art is very functional. TUOHREM is a unique artwork that creates a pleasant atmosphere and living environment.

TUOHREM, 2015
polyester, polyurethane and rubber
1100 x 1400 cm
433 x 551.2 inches

location: WZC De Berk - Meerhout, BE



VIUNAP, 2013 – 2014
3D print, polyester and wood
68 × 94 × 108 cm
26.8 × 37 × 42.5 inches



EGATONK

The EGATONK-project was developed for the exhibition 'Horizon 8300' in Knokke which was set up to promote new architecture for this typical Belgian seaside town.

Zaha Hadid presented a complete new vision for the train station that was in high contrast with the usual white cottage 'obligations' in this town. For a referendum in connection with the exhibition, Nick Ervinck was asked as one of four artists to do 'something' with Knokke. For the artist it was immediately clear he had to use this cottage style and turn it into something absurd. The EGATONK wall print was presented on a 2,5 x 5 meter scale. The cottages are no longer static but become figures with connotations to crabs and other sea animals that walk along the beach. They remind us of the impossible structures in the engravings of the mathematician Escher (1898-1972). Their double identity, both building and animal, also relates to the well-known duck-rabbit image puzzle that challenges our way of seeing and interpreting the world.

EGATONK, 2009
print
100 x 200 cm, framed 133 x 233 cm
39.4 x 78.7 inches, framed 52.4 x 91.7 inches



18

VIUNAP, 2009
print
50 x 50 cm and 50 x 50 cm, framed 74 x 134 cm
19.7 x 19.7 inches and 19.7 x 19.7 inches, framed 29.1 x 52.8 inches



19

VIUNAP, 2009
study





YARONULK, 2009 - 2010
3D print and plexi
70 x 138 x 90 cm
27.6 x 54.3 x 35.4 inches



YARONULK

One day, Nick Ervinck wants to create a scale model of the basilica of Koekelberg, which will be 14 metres long. This modular sculpture will be composed of metal pipes, connected to one another by a system of screws.

A many-sided tent will then be hung inside this meccano-skeleton and will serve as a video room. The projected video tour will be so lifelike, shining like a hyper-realistic trompe l'oeil, that the viewers will have the momentary illusion of witnessing a filmed representation of the actual construction instead of an imaginary, digitally constructed image. Ervinck chooses for the clear delineation of geometrical volumes, typical of Art Deco, as this language is more suitable for his enterprise than the nervous rhythms of Gothic vaults. While the replica is more than 100 times smaller than the life-size basilica, the entire reconstruction was a grand task in itself. This ten time smaller scale model is not a modular construction, but consists of two 3D prints in polyamide, which were then printed and composed in about forty separate pieces. The cage was also given a rust-imitation. After it had been carefully and repeatedly sanded and varnished, the tent was placed inside the skeleton.

YARONULK, 2009 - 2010
print
100 x 200 cm, framed 133 x 233 cm
39.4 x 78.7 inches, framed 52.4 x 91.7 inches



24



YARONULK, 2009 - 2010
3D print and plexi
70 x 138 x 90 cm
27.6 x 54.3 x 35.4 inches

exhibition: 2010 New Monuments, Middelheim - Antwerpen, BE

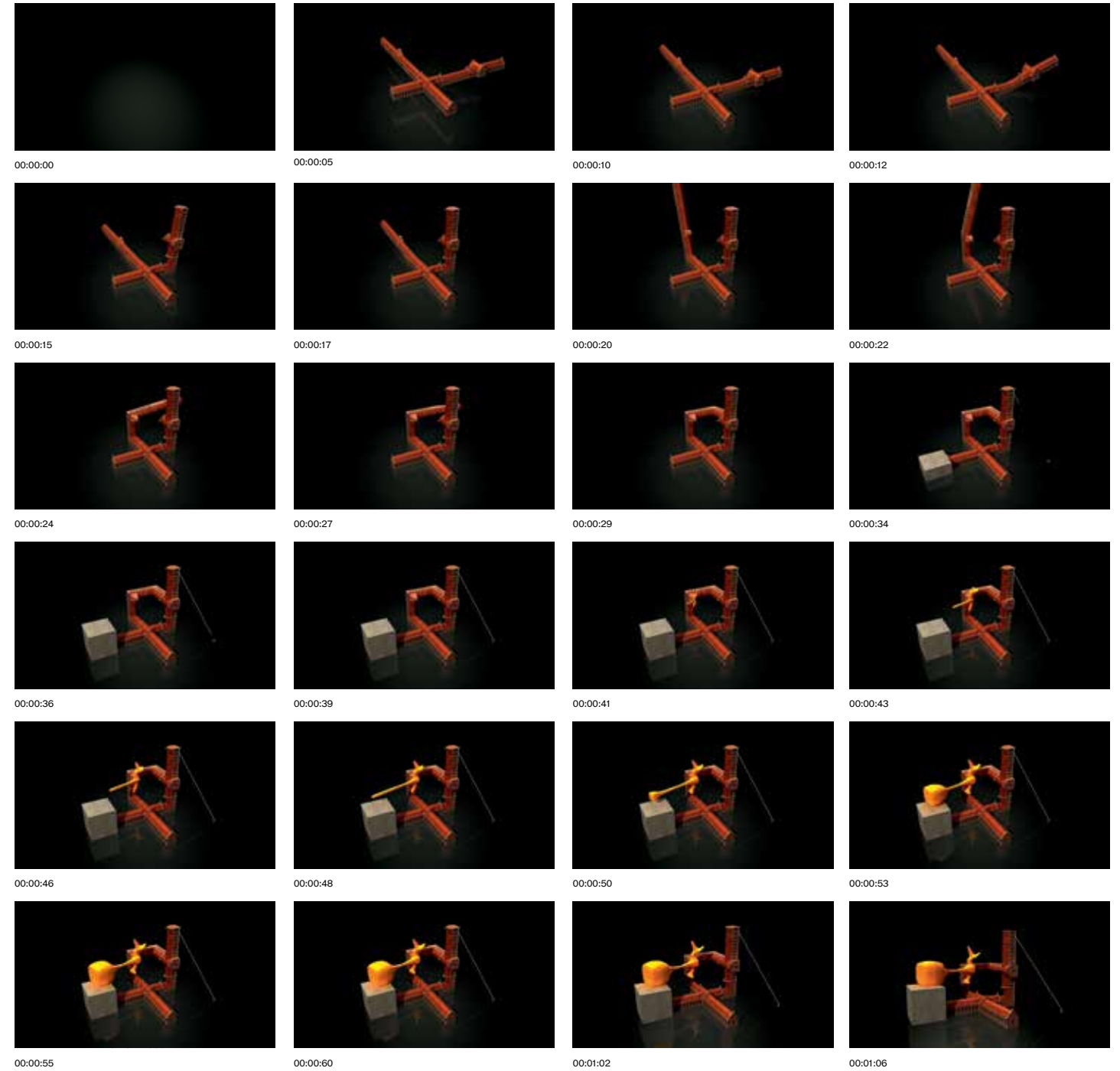
25



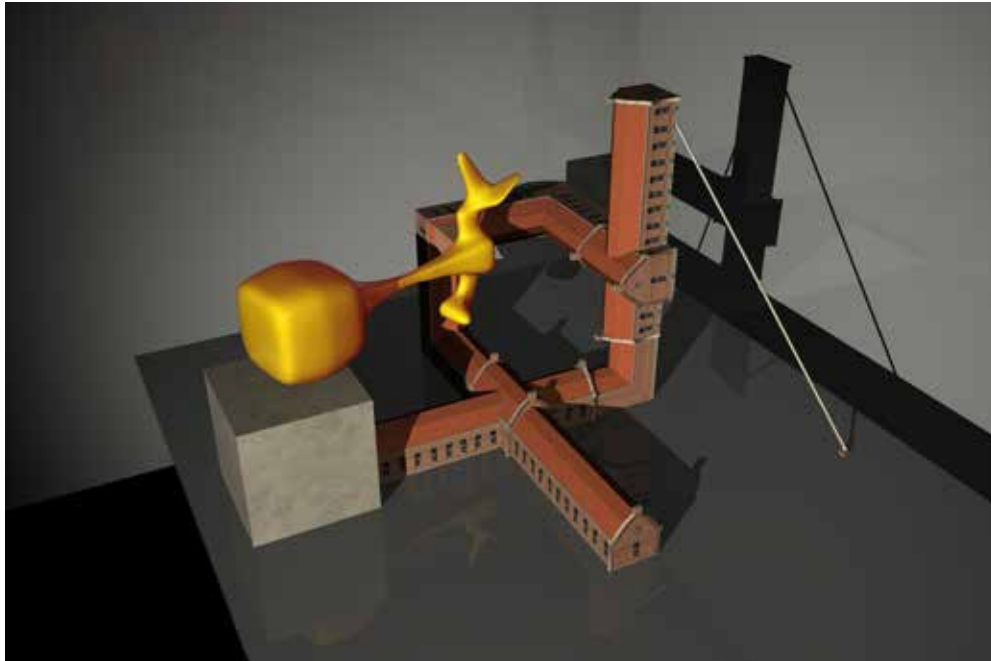
LOTIPACAR, 2010
study



REWOTFIU, 2009 - 2016
3D print
60 x 31 x 38 cm
23.6 x 12.2 x 15 inches

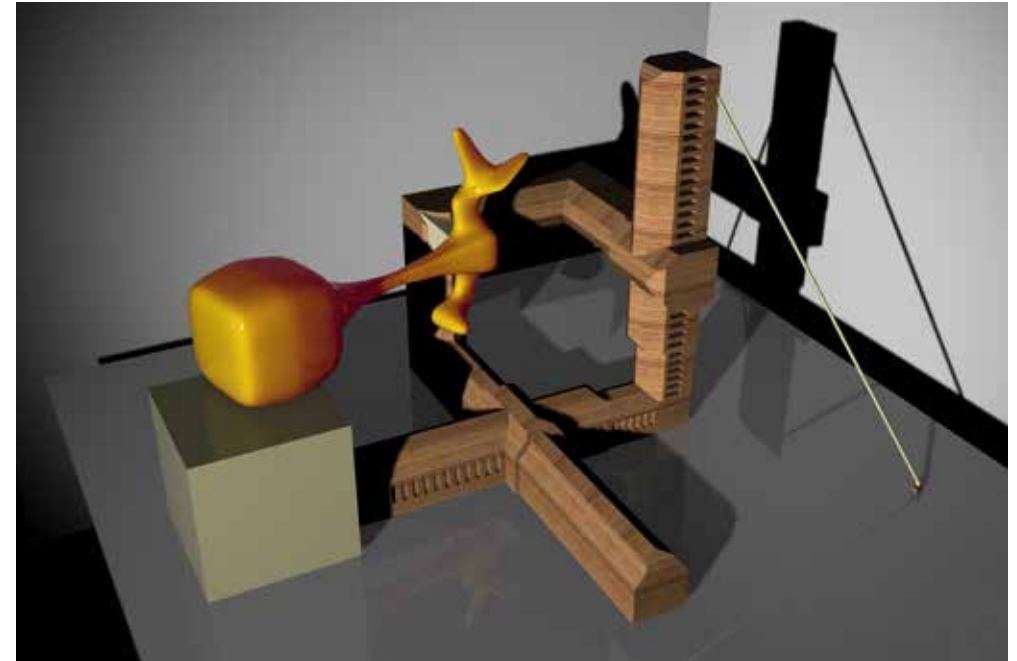


COLBATROPS, 2008
3D animation
01'66"



28

COLBATROPS, 2006
print
50 x 100 cm, framed 74 x 124 cm
19.7 x 39.4 inches, framed 29.1 x 48.8 inches



29

GNI_D_GH_95_jan2004, 2004
print
60 x 100 cm, framed 84 x 124 cm
23.6 x 39.4 inches, framed 33.1 x 48.8 inches



SOLBARGIAFUTOBS

SOLBARGIAFUTOBS is a panoramic image of a familiar landscape, occupied by 'futuristic architecture of the past'. Using large wall prints, the virtual designs are now applied to a physical bearer and thus present in real space. Yet, this image is a construction of a possible world which can never be materialised. This world cannot be mounted by the viewer.

The rough bric-a-brac version of the sculpture is almost opposite to the smooth, clean shape of the blob. The rough version is representative of our physical world, whereas the clean version is characteristic of the digital, industrial world. The area of tension between both worlds is what interests Nick Ervinck, who is mainly fascinated by tension between the box and the blobs. He captures organics blob shapes in cages and places old angular architecture in symbiosis with new organic blob shapes – balanced combinations, tensions and fertilizations between old and new, the physical and the virtual. This also includes sculptures such as Xobbekops, Elbatargscu, Siutobs and Salb Furchak.

SOLBARGIAFUTOBS, 2004 - 2010

wallprint
408 x 1464 cm
160.6 x 576.4 inches

location: Milho - Oostende, BE

30

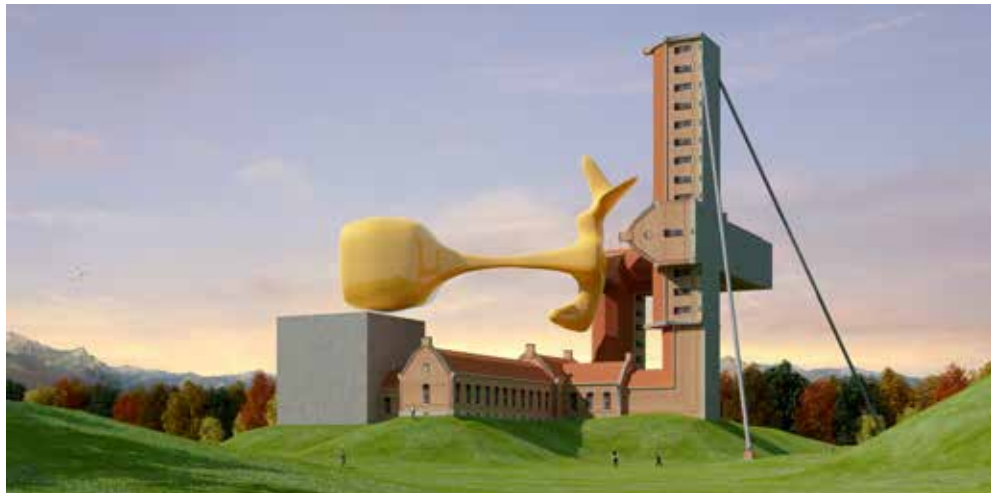


detail **SOLBARGIAFUTOBS**, 2004 - 2010

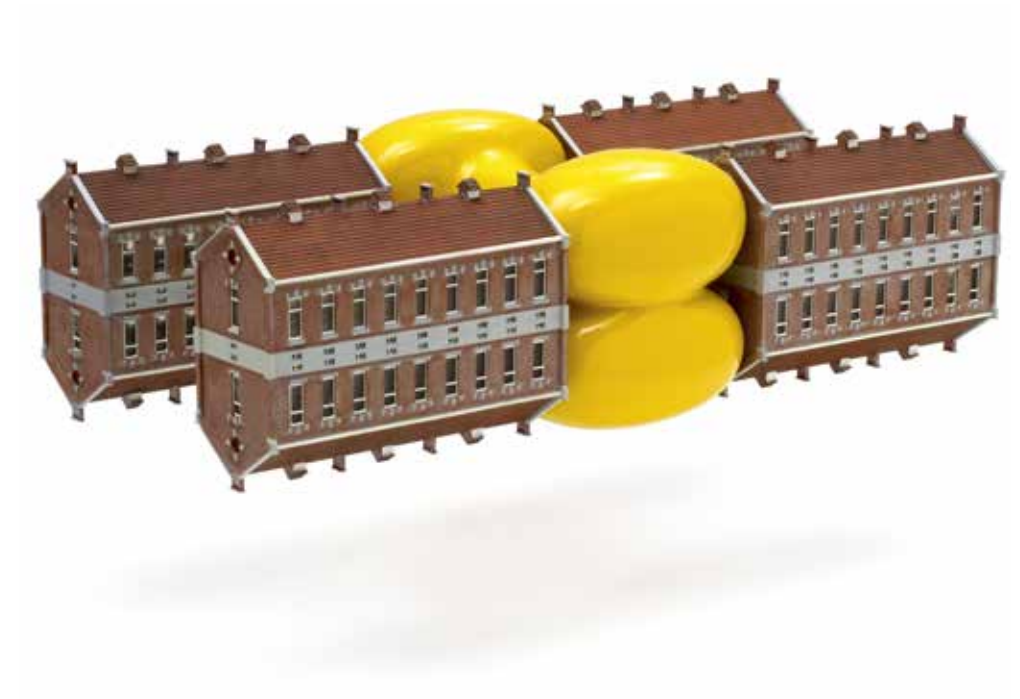
wallprint
408 x 1464 cm
160.6 x 576.4 inches

location: Milho - Oostende, BE

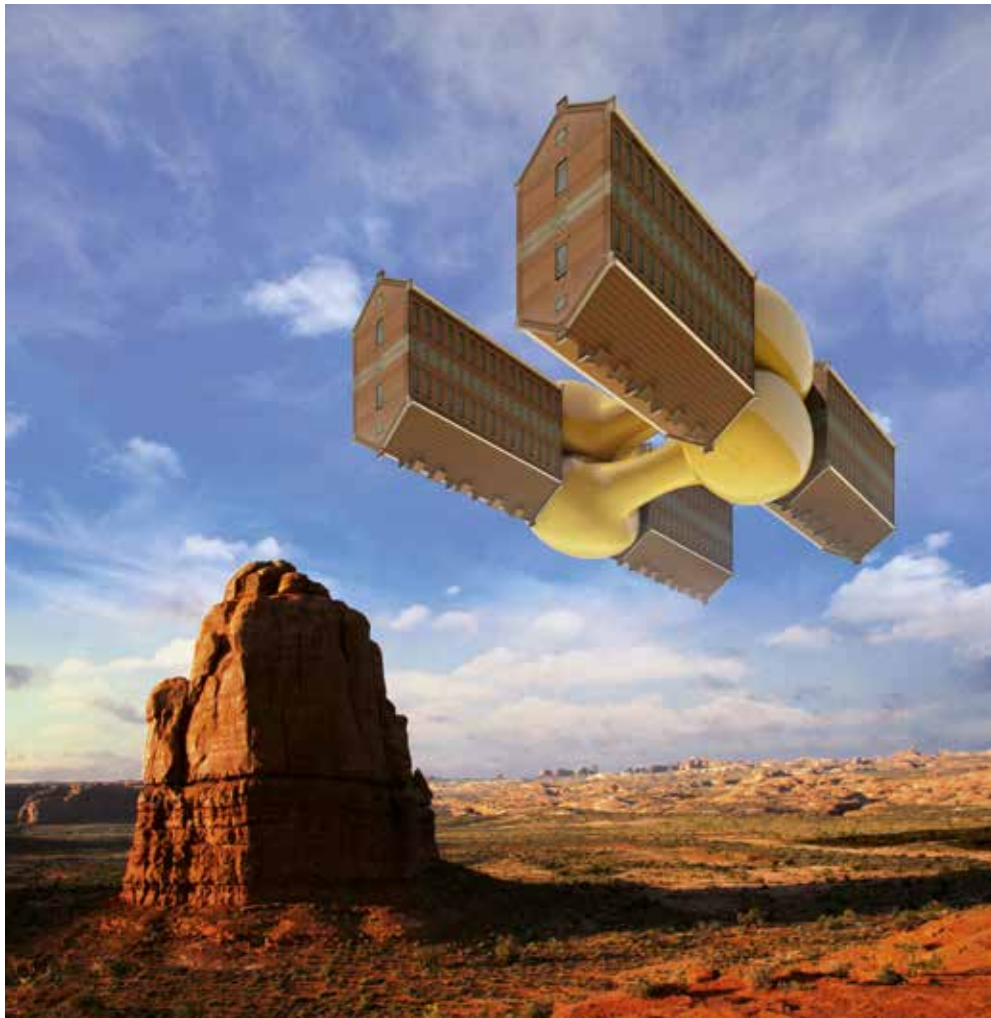
31



COLBATROPS, 2007
print
50 x 100 cm, framed 74 x 124 cm
19.7 x 39.4 inches, framed 29.1 x 48.8 inches



TRIAFUTOBS, 2007
iron, plexi, polyester and polyurethane
20 x 65 x 30 cm
7.9 x 25.6 x 11.8 inches



TRIAFUTOBS, 2006 - 2007
print
50 x 50 cm, framed 74 x 74 cm
19.7 x 19.7 inches, framed 29.1 x 29.1 inches



RETPOCIUS, 2007 - 2008
plexi and polyester
19 x 34 x 34 cm
7.5 x 13.4 x 13.4 inches



CORECHNOTS, 2008
print
50 x 100 cm, framed 74 x 124 cm
19.7 x 39.4 inches, framed 29.1 x 48.8 inches



38

CORECHNOTS, 2007 - 2008
bricks, concrete, iron, lamps, plexi, polyester, polyurethane and wood
68 x 130 x 130 cm
26.8 x 51.2 x 51.2 inches



39

studio view: 2008 Studio Nick Ervinck - Kortemark, BE



00:00:00



00:00:01



00:00:02



00:00:03



00:00:04



00:00:05



00:00:06



00:00:07



00:00:04



00:00:05



00:00:06



00:00:07



00:00:04



00:00:05



00:00:06



00:00:07



00:00:08



00:00:09



00:00:10



00:00:11



00:00:08



00:00:09



00:00:10



00:00:11



00:00:12



00:00:13



00:00:14



00:00:15



00:00:12



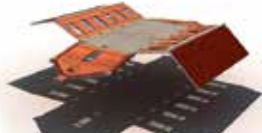
00:00:13



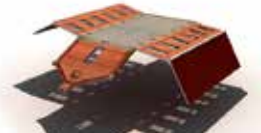
00:00:14



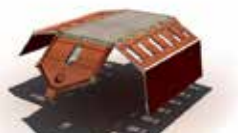
00:00:15



00:00:16



00:00:17



00:00:18



00:00:19



00:00:16



00:00:17



00:00:18



00:00:19



00:00:20



00:00:21



00:00:22



00:00:23



00:00:20



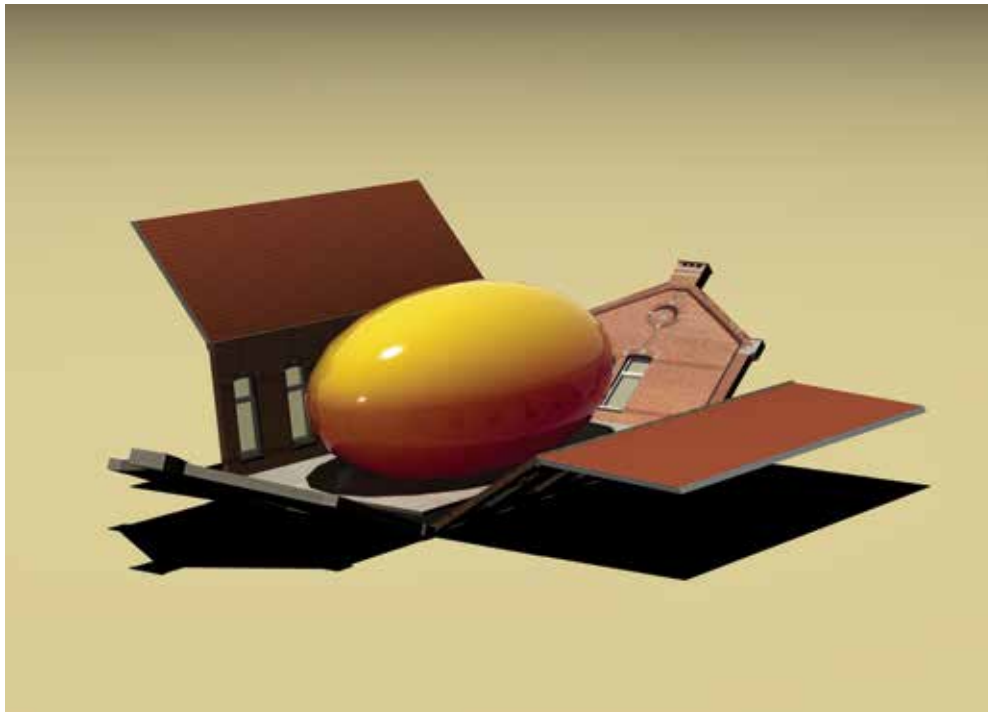
00:00:21



00:00:22



00:00:23



42

SIUTOBS, 2006 - 2008
print
40 x 30 cm
15.7 x 11.8 inches



43

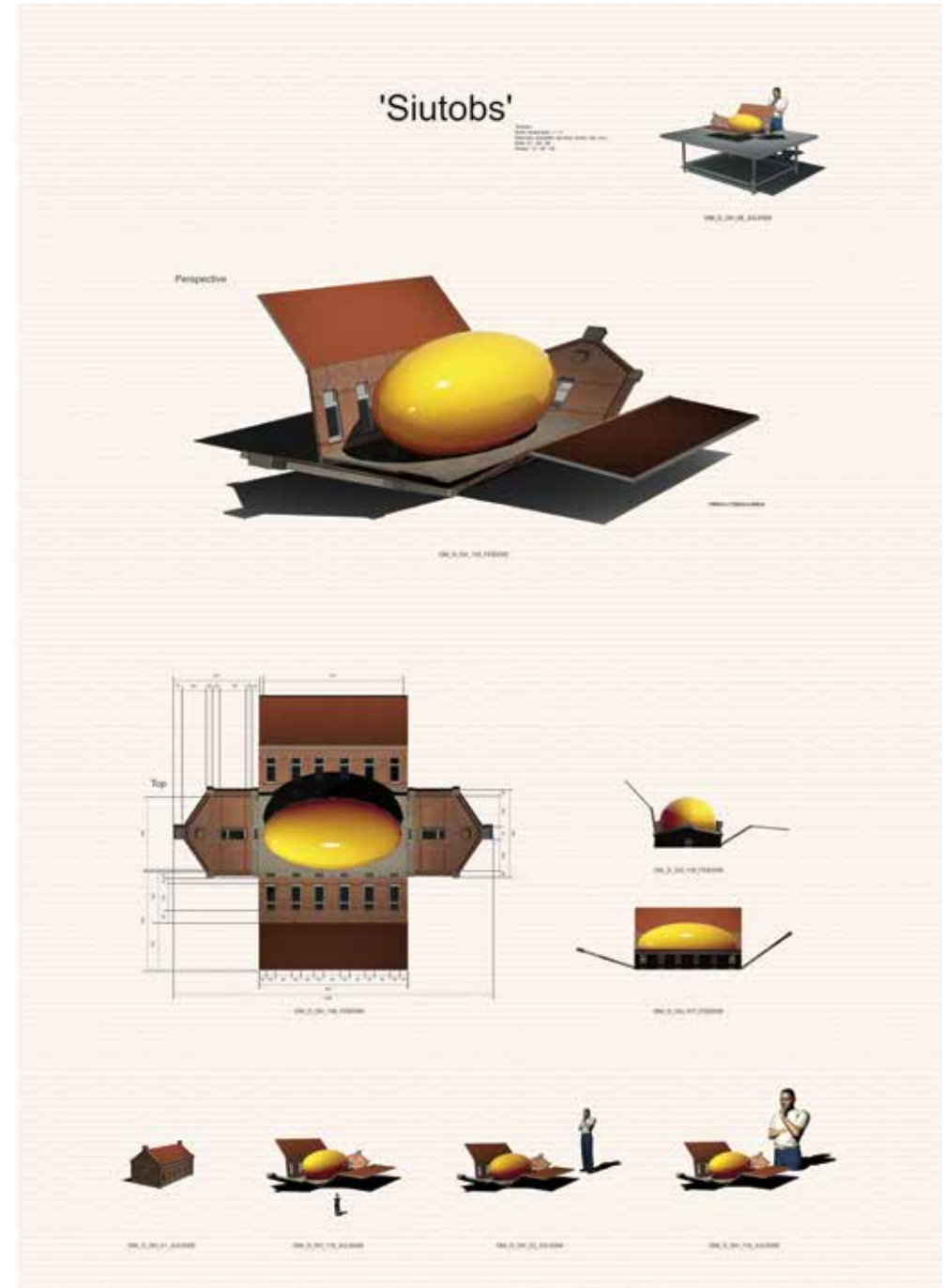
SIUTOBS, 2006 - 2008
bricks, concrete, iron, plexi, polyester, polyurethane and wood
55 x 192 x 135 cm
21.7 x 75.6 x 53.1 inches





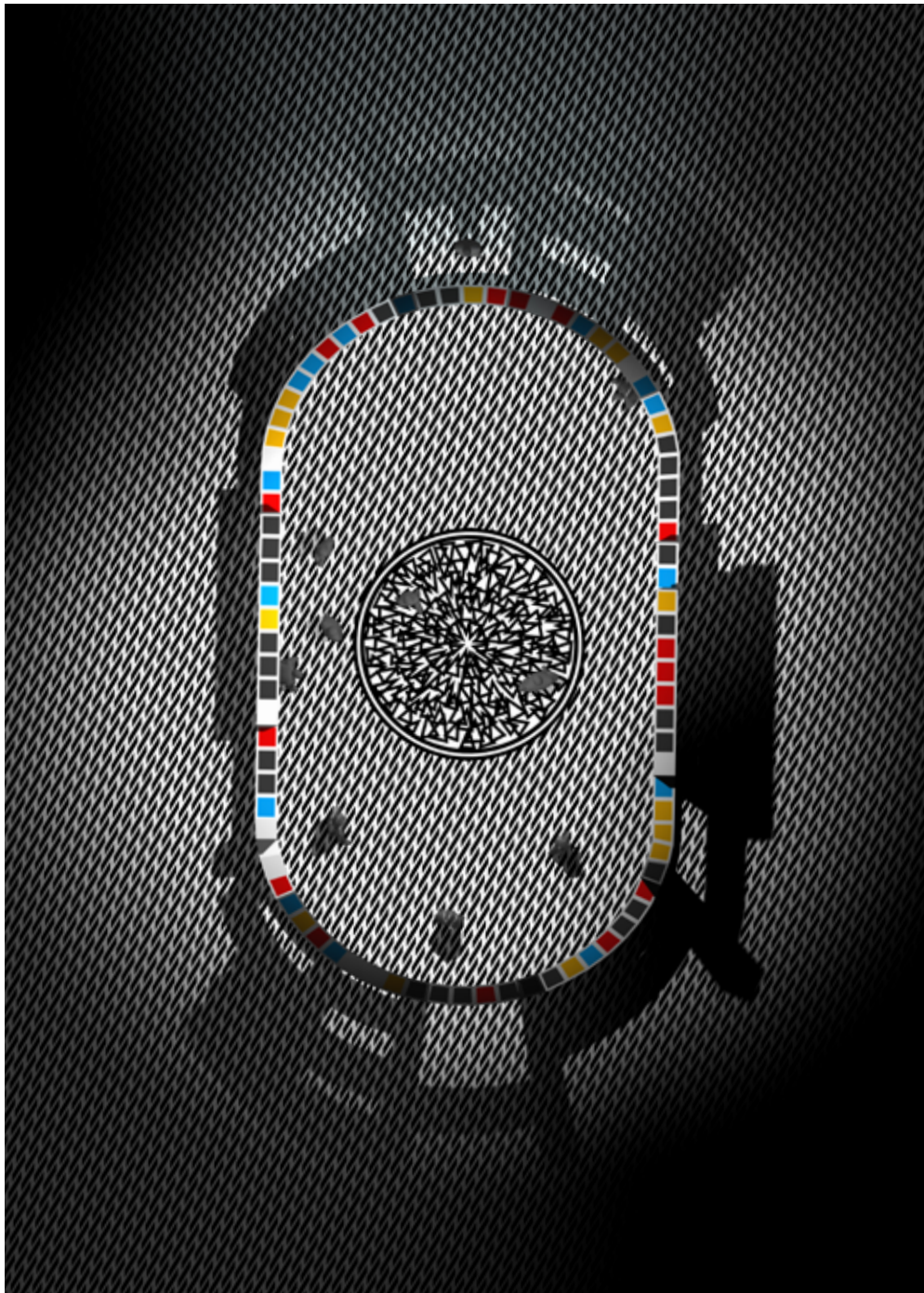
46

SIUTOBS, 2007
print
40 x 30 cm, framed 56 x 46 cm
15.7 x 11.8 inches, framed 22 x 18.1 inches

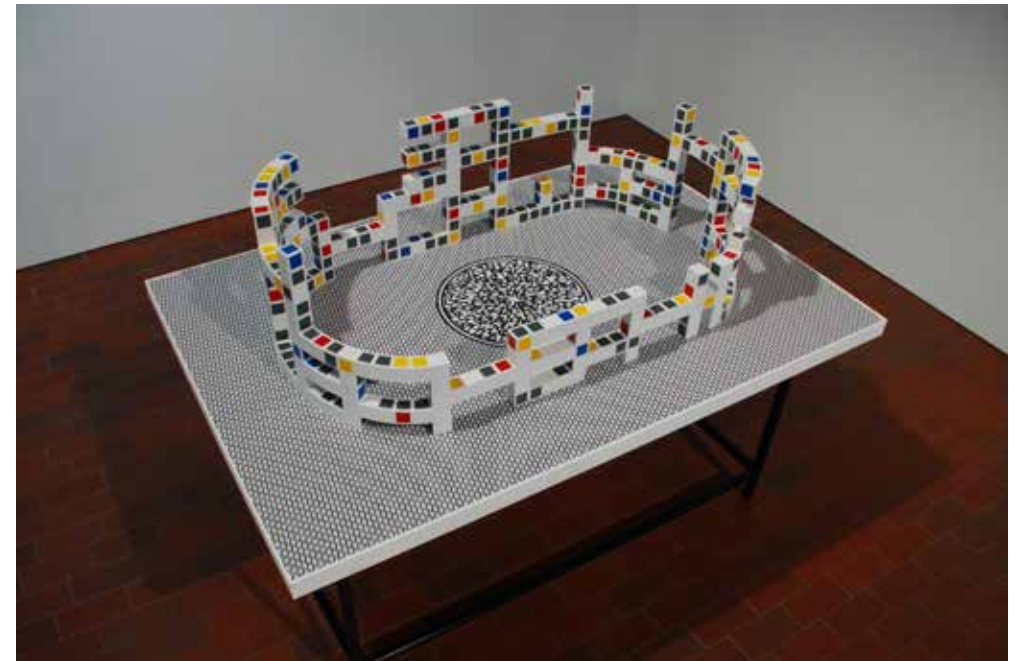


47

SIUTOBS, 2006
print
83 x 56 cm, framed 107 x 80 cm
32.7 x 22 inches, framed 42.1 x 31.5 inches



ODETTE, 2008
print
48 x 36 cm, framed 64 x 52 cm
18.9 x 14.2 inches, framed 25.2 x 20.5 inches



ODETTE, 2008
iron, pvc and wood
52 x 200 x 130 cm
20.5 x 78.7 x 51.2 inches



ODETTE, 2008
print
50 x 100 cm, framed 74 x 124 cm
19.7 x 39.4 inches, framed 29.1 x 48.8 inches



50



51



ODETTE, 2008
DJset, dvd-players, I-pod, lights, music boxes, TV's, wood, ...
450 cm x 1469 cm x 853 cm
177.2 x 578.3 x 335.8 inches

exhibition view: 2008 GNI-RI apr2008, Odette, Venetiaanse Gaanderijen - Oostende, BE



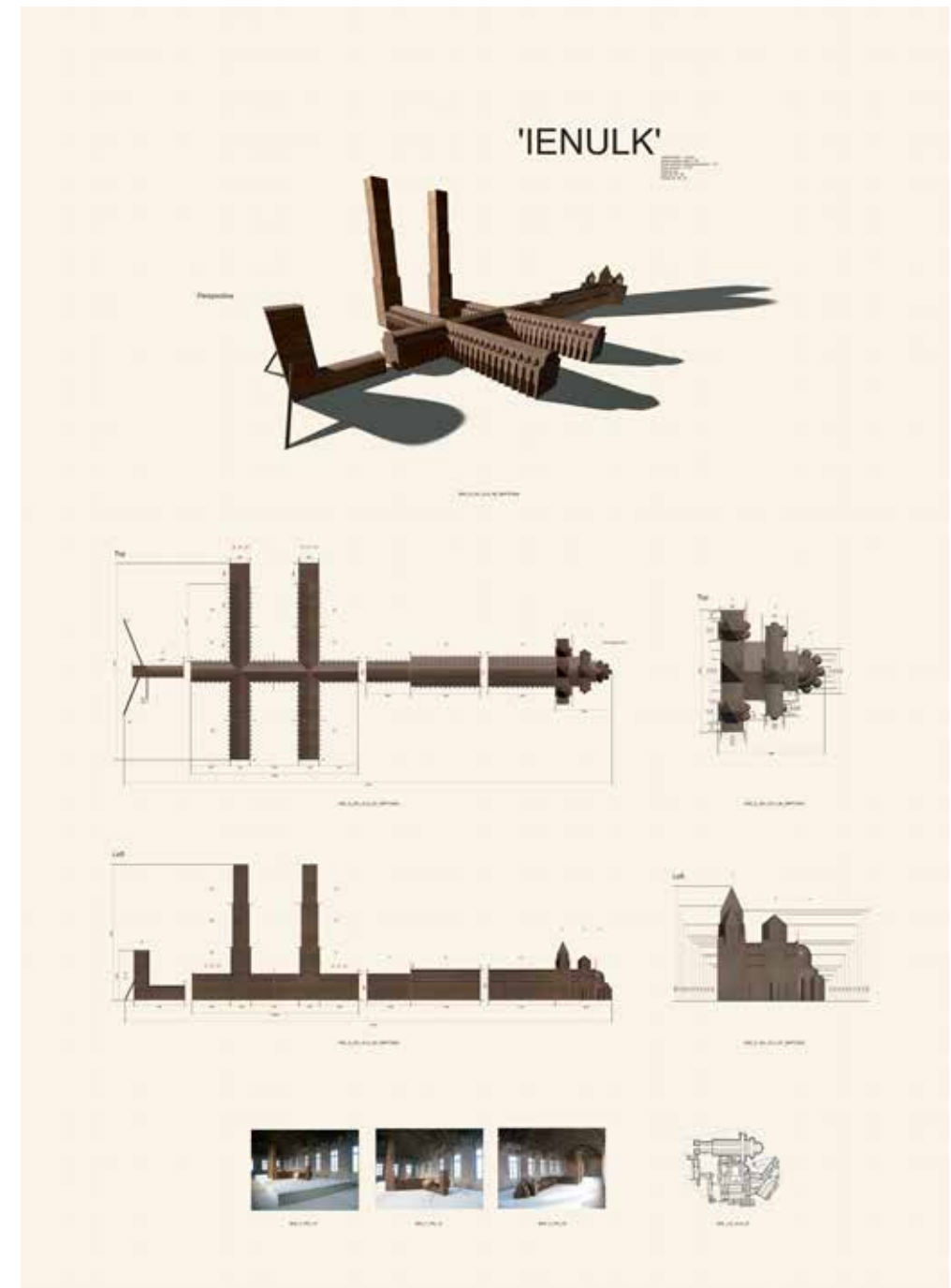
ODETTE, 2008
DJset, dvd-players, I-pod, lights, music boxes, TV's, wood, ...
450 cm x 1469 cm x 853 cm
177.2 x 578.3 x 335.8 inches

exhibition view: 2008 GNI-RI apr2008, Odette, Venetiaanse Gaanderijen - Oostende, BE



IENULKAR, 2004 - 2006
oak wood
330 x 1105 x 475 cm
129.9 x 435 x 187 inches


exhibition view: 2006 Perseverance, Godshuis – St. Laureins, BE



IENULKAR, 2004 - 2006
print
81 x 112 cm, framed 105 x 136 cm
31.9 x 44.1 inches, framed 41.3 x 53.5 inches



IEBANULK

 **The 20th century was characterized by a growing mobility, and consequently by a growing cultural exchange. This exchanges sometimes resulted in a culture clash. Nick Ervinck tries to visualize the problems of our hypermobile culture by mounting the abbey of Cluny – a Benedictine monastery in France in Romanesque style, dating from the 10th to the early 12th century – on an enormous oil tanker.**

IEBANULK can be interpreted as a hypermobile ark of Noah and has reminiscences to a Western Culture, which once was very powerful. By combining these two elements, the public is forced to observe in a different manner. While the dimensions of the tanker and the cathedral are perfectly balanced, the towers are raised beyond proportion. Here, Ervinck points at a current 'tower of Babel-complex' in our society; a striving to build beyond the sky, in order to show off and to reach God, or at least to find the unknown. Yet, IEBANULK will never sail away, and therefore it is rather an empty meditative space. IEBANULK is designed fully digital and the lower part was moulded by a machine. Resulting out of this working process is a symmetric form, with smooth curves, which are polished afterwards.

IEBANULK, 2004 - 2006
polyester and wood
125 x 250 x 75 cm
49.2 x 98.4 x 29.5 inches

exhibition view: 2006 Progress, Provinciale prijs voor beeldende kunst, Be-Part – Waregem, BE



IEBANULK, 2004 - 2006
polyester and wood
125 x 250 x 75 cm
49.2 x 98.4 x 29.5 inches



56

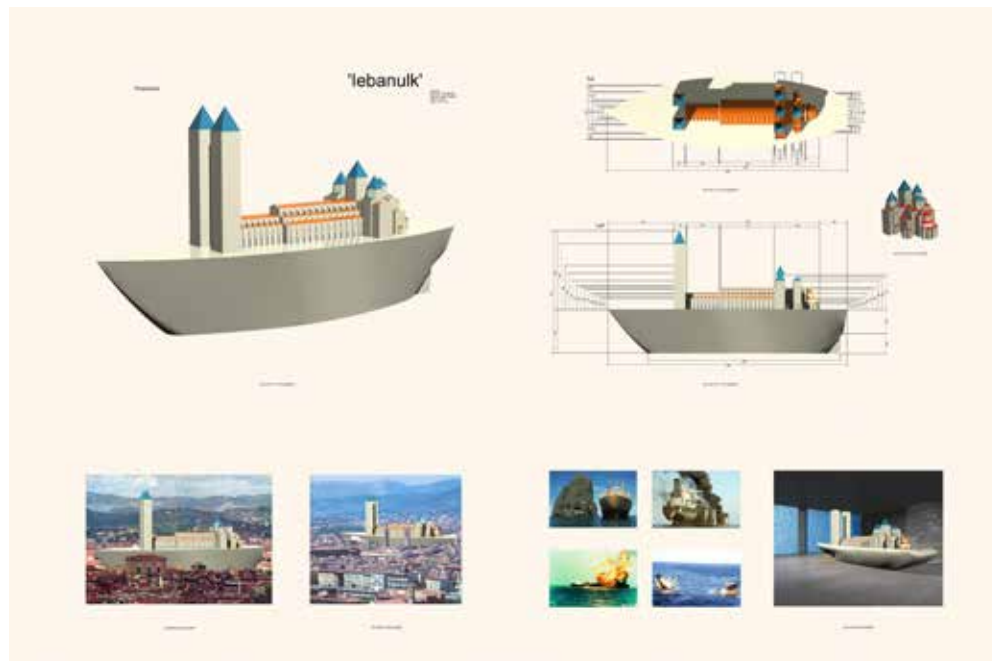


57



exhibition view: 2006 GNI-RI mar2006, Kunst-Zicht – Gent, BE

exhibition view: 2006 GNI-RI nov2006, Brakke Grond – Amsterdam, NL



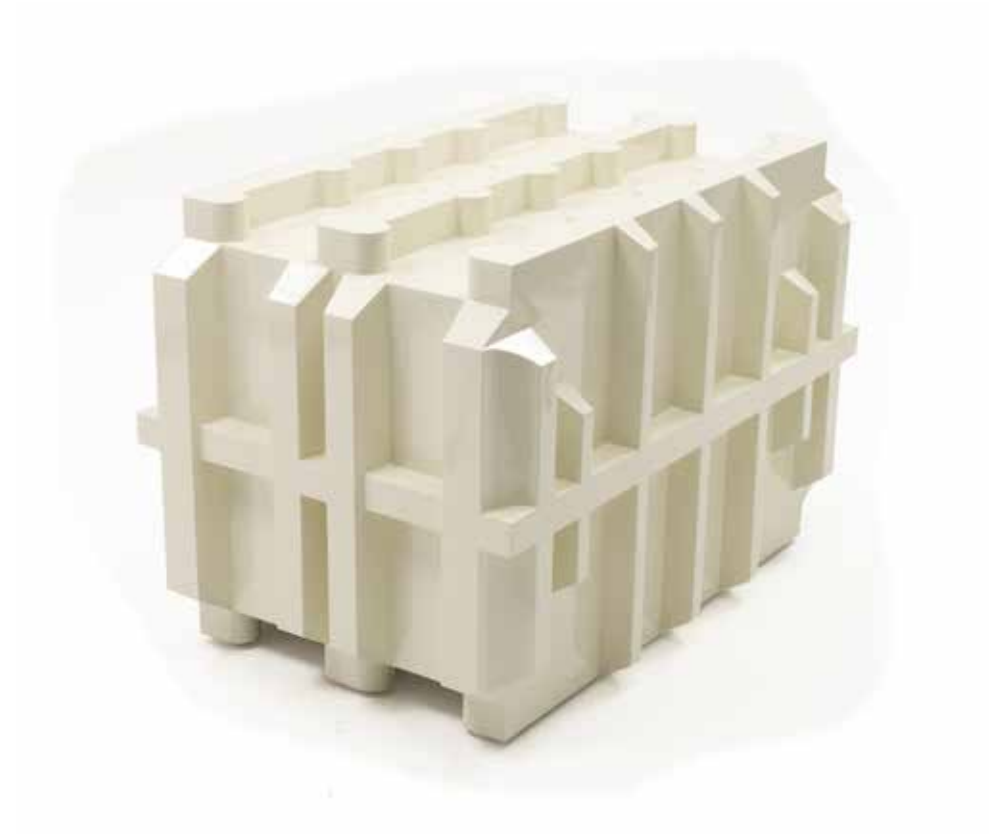
IEBANULK, 2006
print
84 x 126 cm, framed 108 x 150 cm
33.1 x 49.6 inches, framed 42.5 x 59.1 inches



DARCHINOX, 2002 - 2007
chalk, gauze, plaster, styrofoam and wood
32 x 48 x 32 cm and 32 x 48 x 32 cm
12.6 x 18.9 x 12.6 inches and 12.6 x 18.9 x 12.6 inches



WODRALIPU, 2002 - 2006
 chalk, gauze, plaster, styrofoam and wood
 55 x 35 x 30 cm and 55 x 35 x 30 cm
 21.7 x 13.8 x 11.8 inches and 21.7 x 13.8 x 11.8 inches



DARCHINOX, 2002 - 2007
 wood



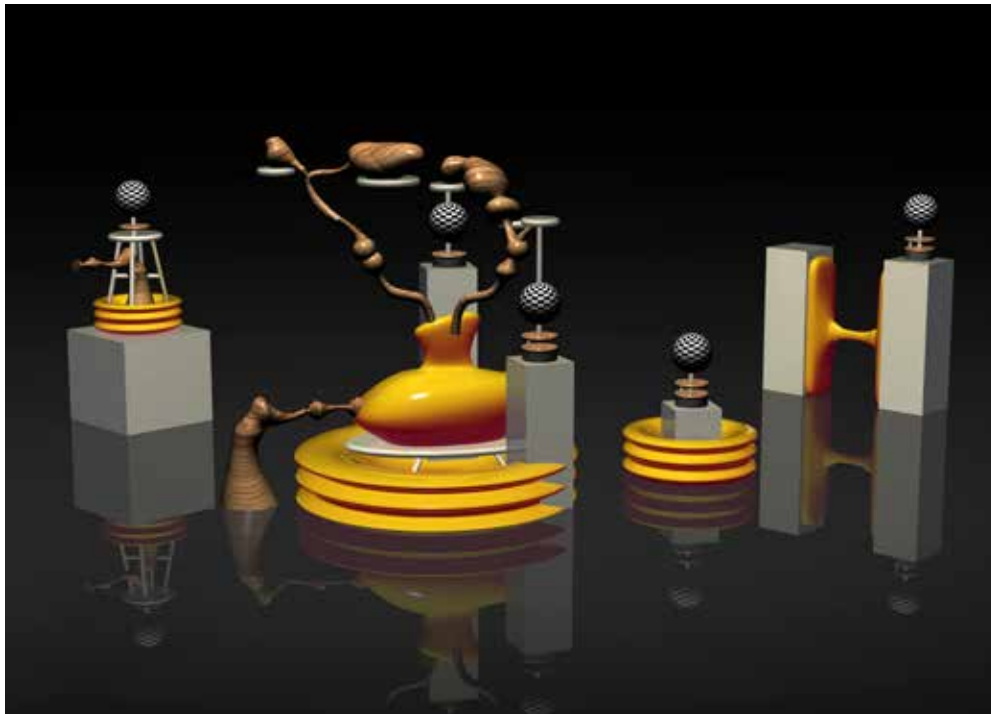
62

GNI_D_GH_73_dec2003, 2003
print
80 x 108 cm, framed 104 x 132 cm
31.5 x 42.5 inches, framed 40.9 x 52 inches



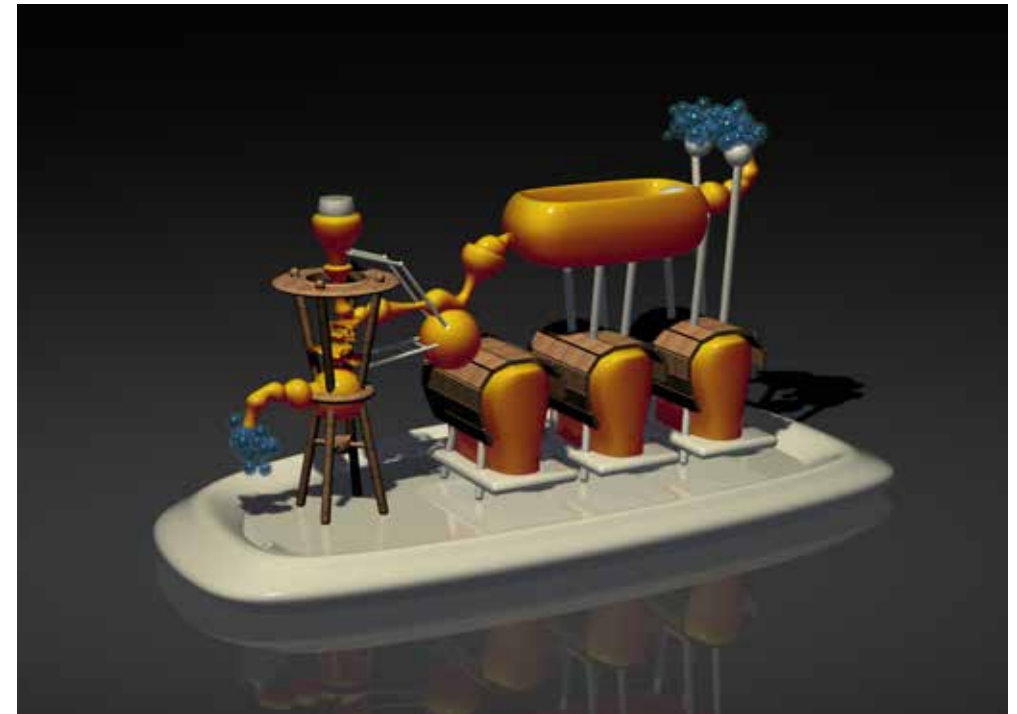
63

GNI_D_GH_40_jan2004, 2004
print
60 x 84 cm, framed 84 x 108 cm
23.6 x 33.1 inches, framed 33.1 x 42.5 inches



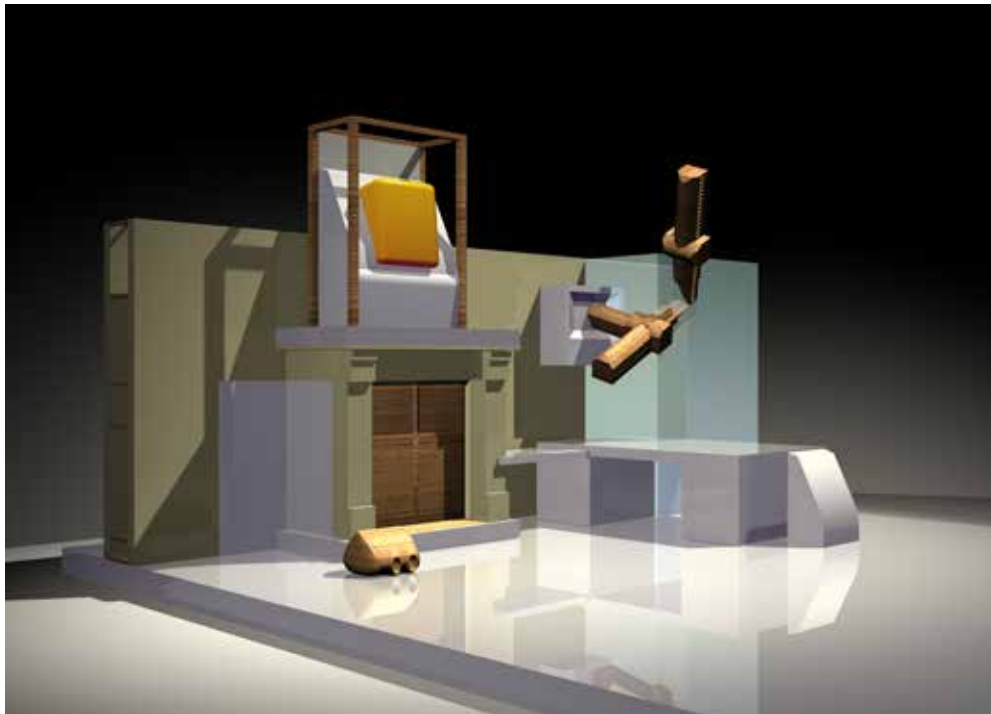
64

GNI_D_GH_102_jan2004, 2004
print
80 x 106 cm, framed 104 x 130 cm
31.5 x 41.7 inches, framed 40.9 x 51.2 inches



65

GNI_D_GH_103_dec2003, 2003
print
80 x 112 cm, framed 104 x 133 cm
31.5 x 44.1 inches, framed 40.9 x 52.4 inches



66

GNI_D_GH_133_jan2004, 2004
print
80 x 106 cm, framed 104 x 130 cm
31.5 x 41.7 inches, framed 40.9 x 51.2 inches



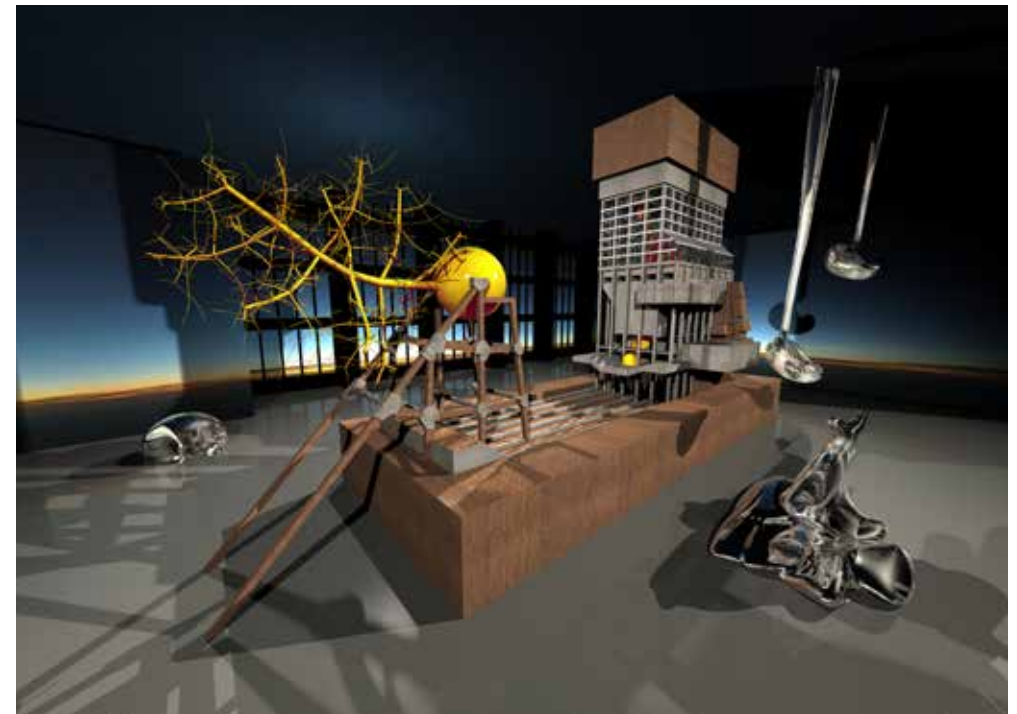
67

GNI_D_GH_44_dec2003, 2003
print
78 x 100 cm, framed 102 x 124 cm
30.7 x 39.4 inches, framed 40.2 x 48.8 inches



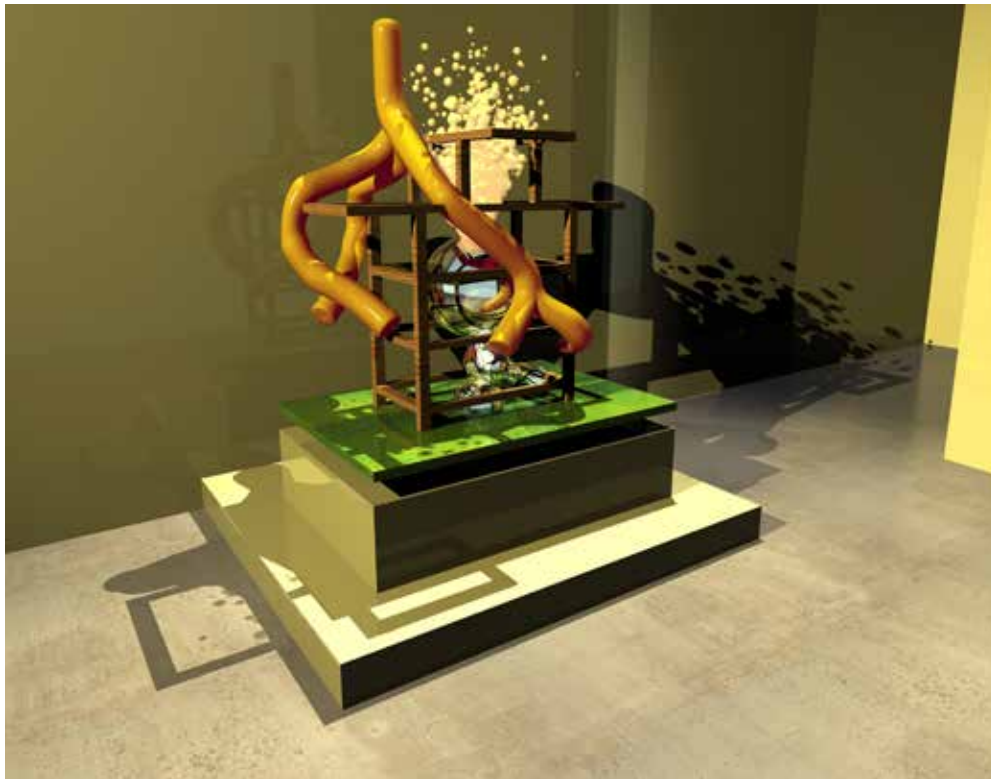
68

GNI_D_GH_55_mar2004, 2004
print
60 x 84 cm, framed 84 x 108 cm
23.6 x 33.1 inches, framed 33.1 x 42.5 inches

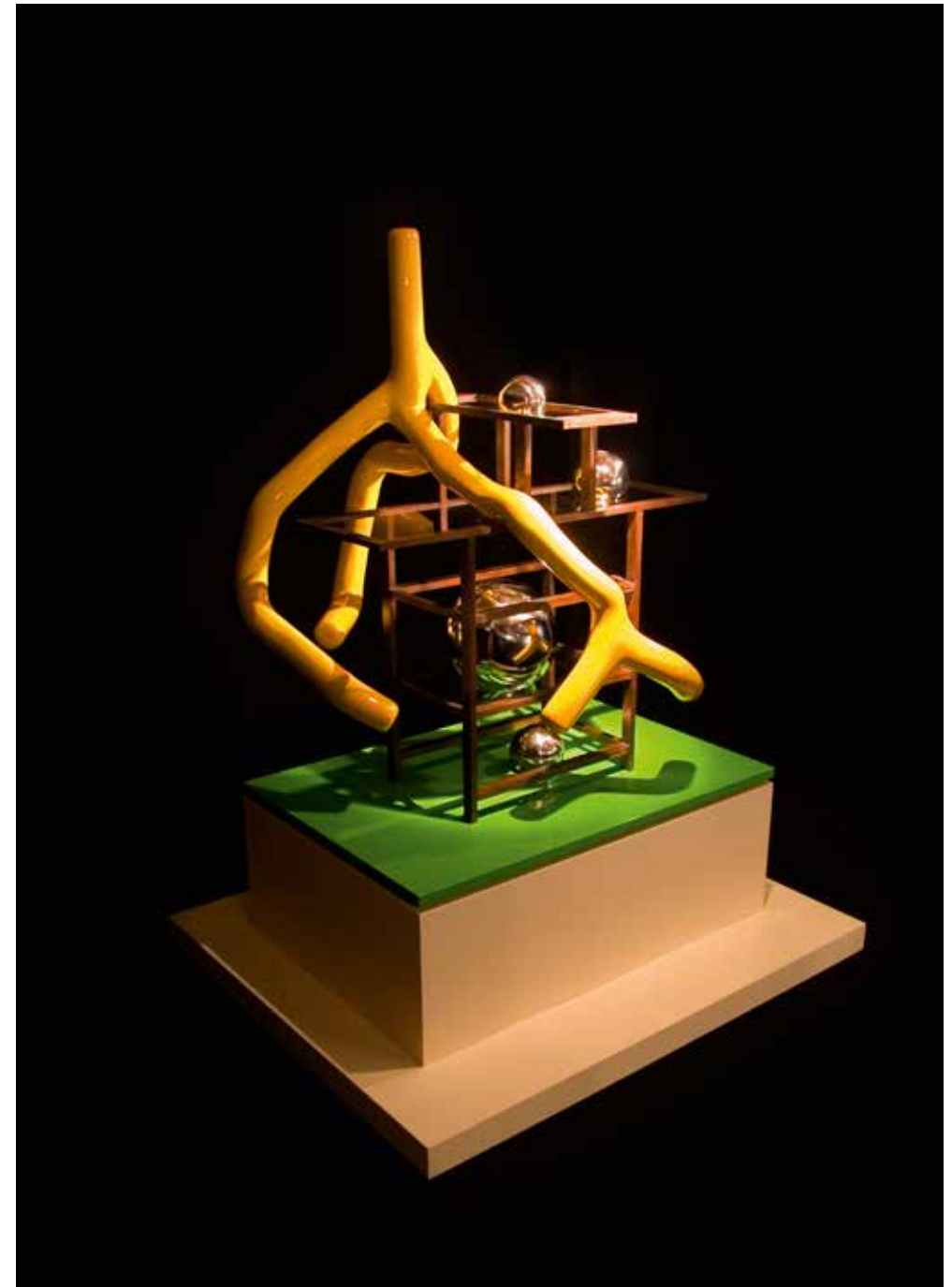


69

GNI_D_GH_50_apr2005, 2005
print
115 x 80 cm, framed 139 x 104 cm
45.3 x 31.5 inches, framed 54.7 x 40.9 inches



GNI_D_GH_174_apr2004, 2004
print
80 x 112 cm, framed 104 x 136 cm
31.5 x 44.1 inches, framed 40.9 x 53.5 inches



SALB FURCHAK, 2004 - 2006
mirror balls, plexi, polyester, polyurethane and wood
239 x 190 x 160 cm
94.1 x 74.8 x 63 inches



72

exhibition view: 2008 Ad Absurdum, If the world were clear, there'd be no art, Marta – Herford, DE



73

exhibition view: 2008 Rodenbach Fonds Award, HISK – Gent, BE

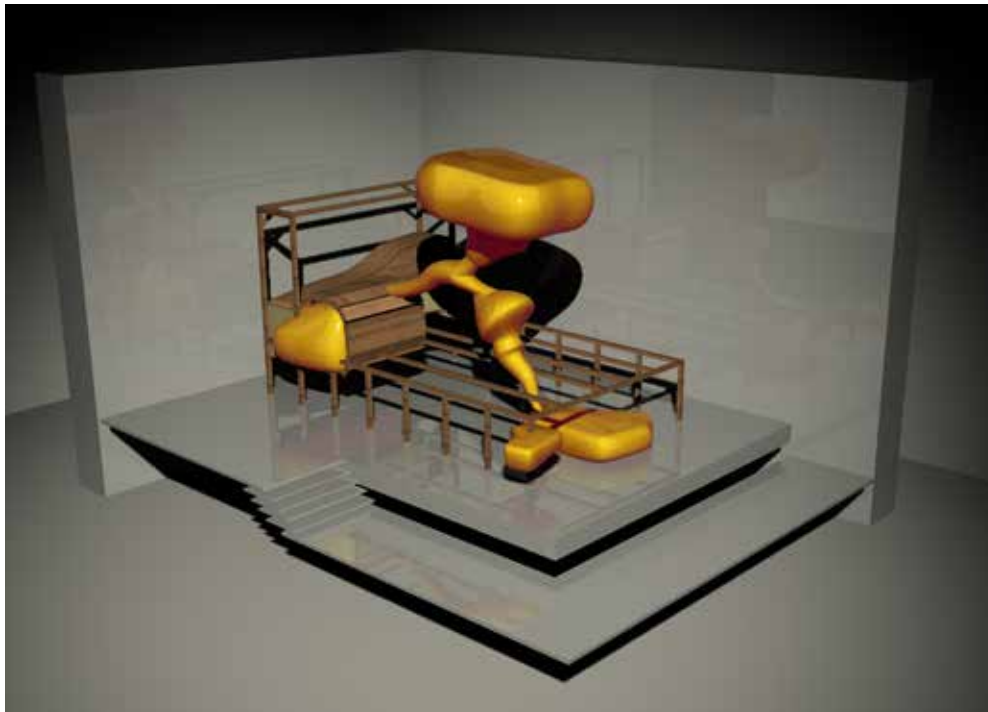


KOSUBKNAT, 2007 - 2008
iron, polyester, pvc and wood
155 x 130 x 390 cm
61 x 51.2 x 153.5 inches

exhibition view: 2008 Utopia-Dystopia_Contemporary Art Project with Mini Golf, Stadhuis – Aalst, BE

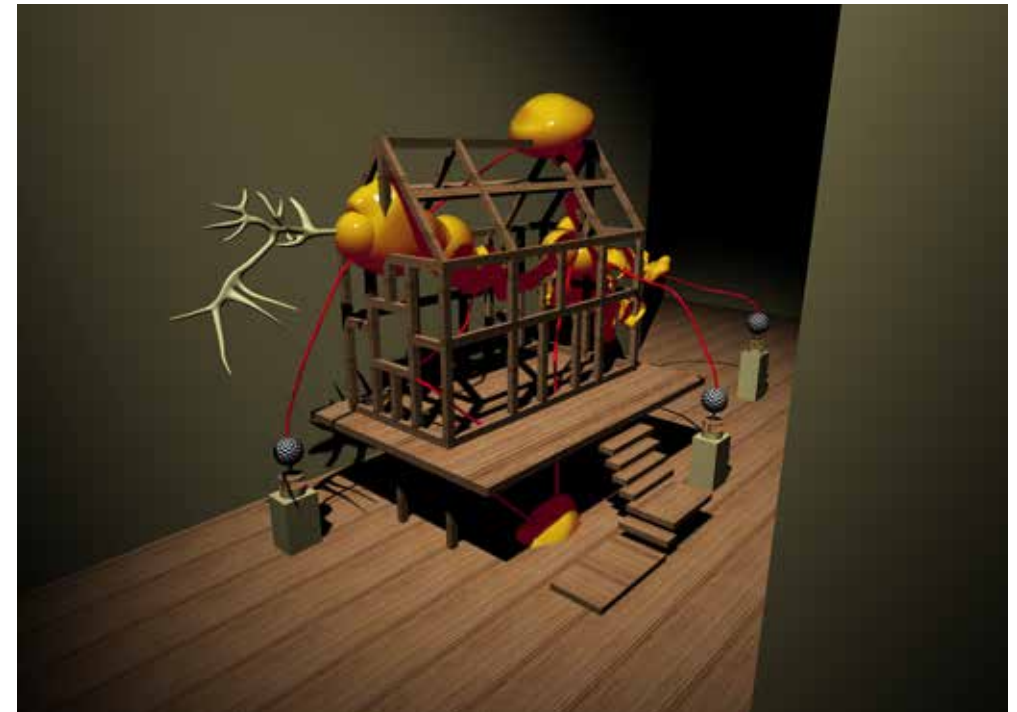


TAMAKINA, 2007 - 2008
iron, polyester, polyurethane, pvc and wood
240 x 267 x 172 cm
94.5 x 105.1 x 67.7 inches



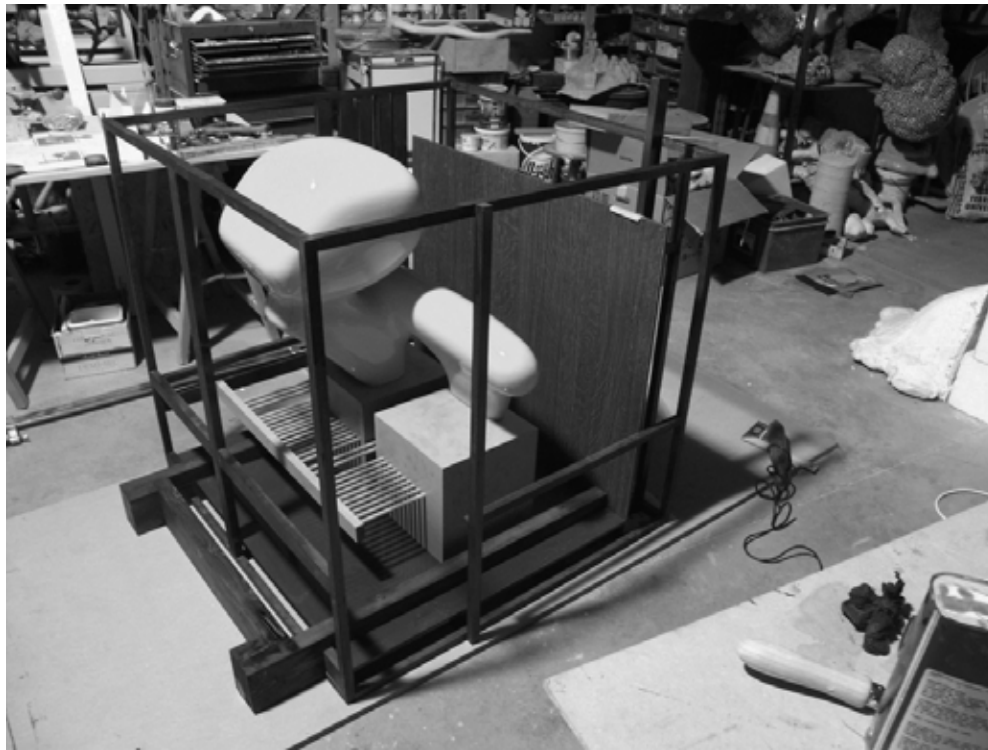
76

GNI_D_GH_102_dec2003, 2003
 print
 80 x 120 cm, framed 104 x 140 cm
 31.5 x 47.2 inches, framed 40.9 x 55.1 inches

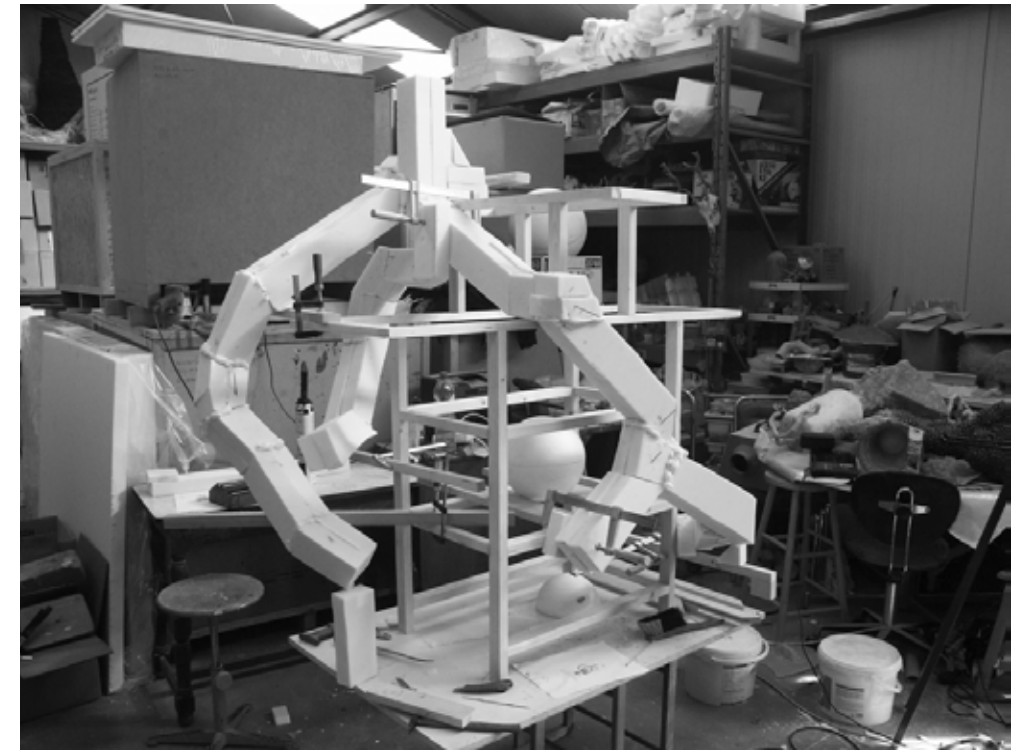


77

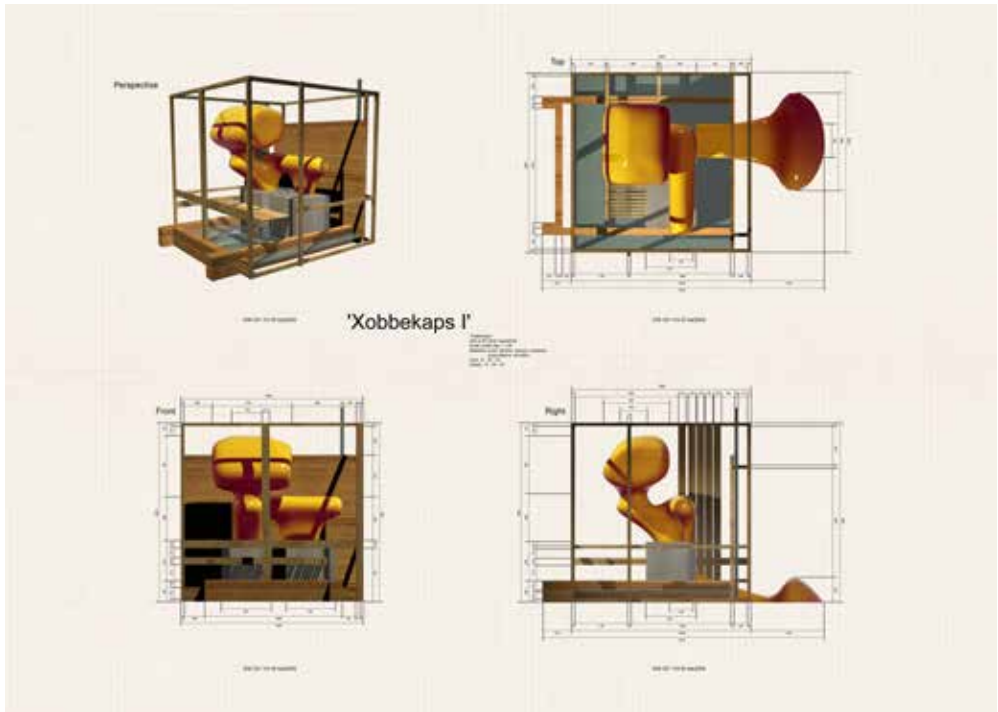
GNI_D_GH_53_dec2003, 2003
 print
 80 x 109 cm, framed 104 x 133 cm
 31.5 x 42.9 inches, framed 40.9 x 52.4 inches



78



79



XOBBEKOPS, 2005
 print
 55 x 70 cm, framed 74 x 94 cm
 21.7 x 27.6 inches, framed 29.1 x 37 inches



GNI_D_GH_22_may2004, 2004
 print
 80 x 116 cm, framed 104 x 140 cm
 31.5 x 45.7 inches, framed 40.9 x 16.7 inches



XOBBEKOPS, 2007
print
50 x 100 cm, framed 74 x 124 cm
19.7 x 39.4 inches, framed 29.1 x 48.8 inches



XOBBEKOPS, 2009 - 2010
formica, polyester and wood
120 x 156 x 100 cm
47.2 x 61.4 x 39.4 inches



84

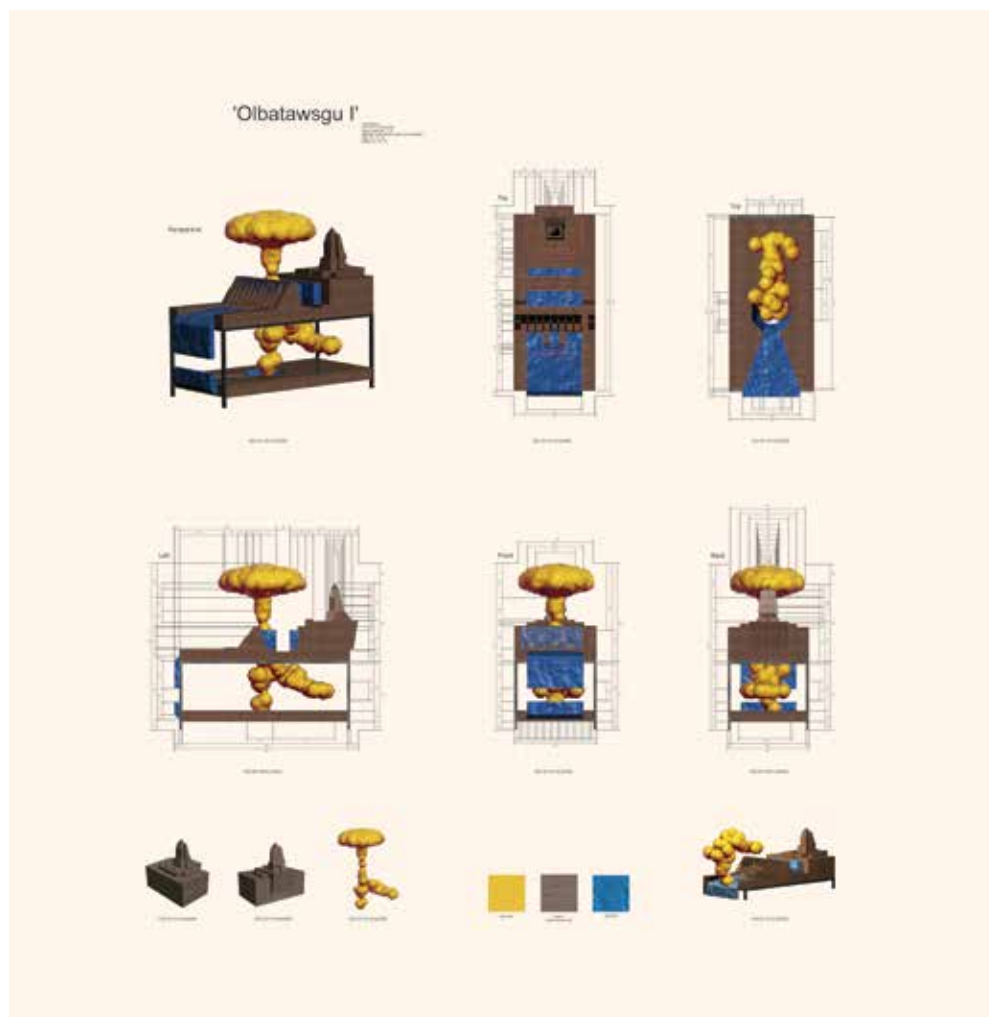
GNI_D_GH_2_apr2005, 2005
print
80 x 120cm, framed 104 x 144 cm
31.5 x 47.2 inches, framed 33.1 x 56.7 inches



85

ETEBNOZAY, 2005
ceramics, chalk, chardboard, formica, gauze, plaster, and wood
270 x 329 x 180 cm
106.3 x 129.5 x 70.9 inches

exhibition view: 2006 Filiaal van de hemel, Stedelijk Museum Lokeren – Lokeren, BE



OLBATAWSGU, 2005
print
91 x 80 cm, framed 115 x 104 cm
35.8 x 31.5 inches, framed 45.3 x 40.9 inches



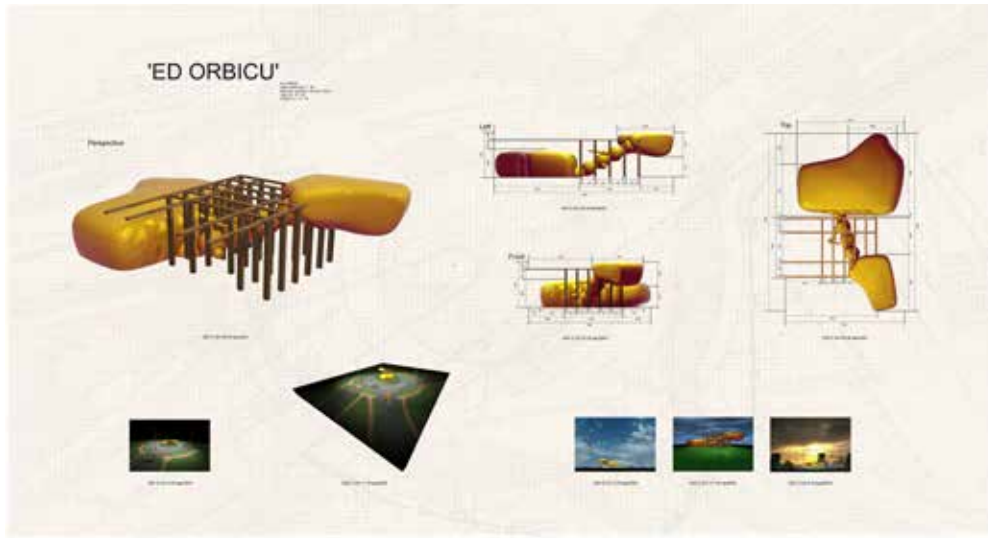
ETEBNOZAY, 2005
print
93 x 79 cm, framed 118 x 103 cm
36.6 x 31.1 inches, framed 46.5 x 40.6 inches



ELBATARGSCU, 2005
 formica, grassfiber, iron, lamps, plaster, plexi, polyester, polyurethane, pvc, trees and wood
 210 x 200 x 90 cm
 82.7 x 78.7 x 35.4 inches

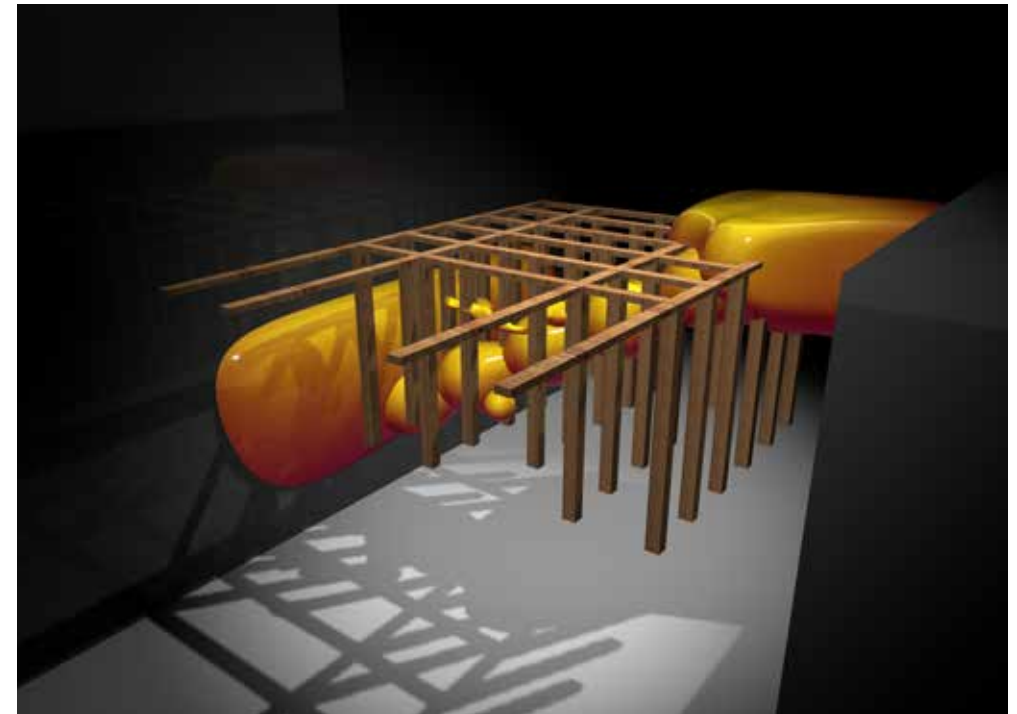


ELBATARGSCU, 2005
 print
 73 x 73 cm, framed 97 x 97 cm
 28.7 x 28.7 inches, framed 38.2 x 38.2 inches



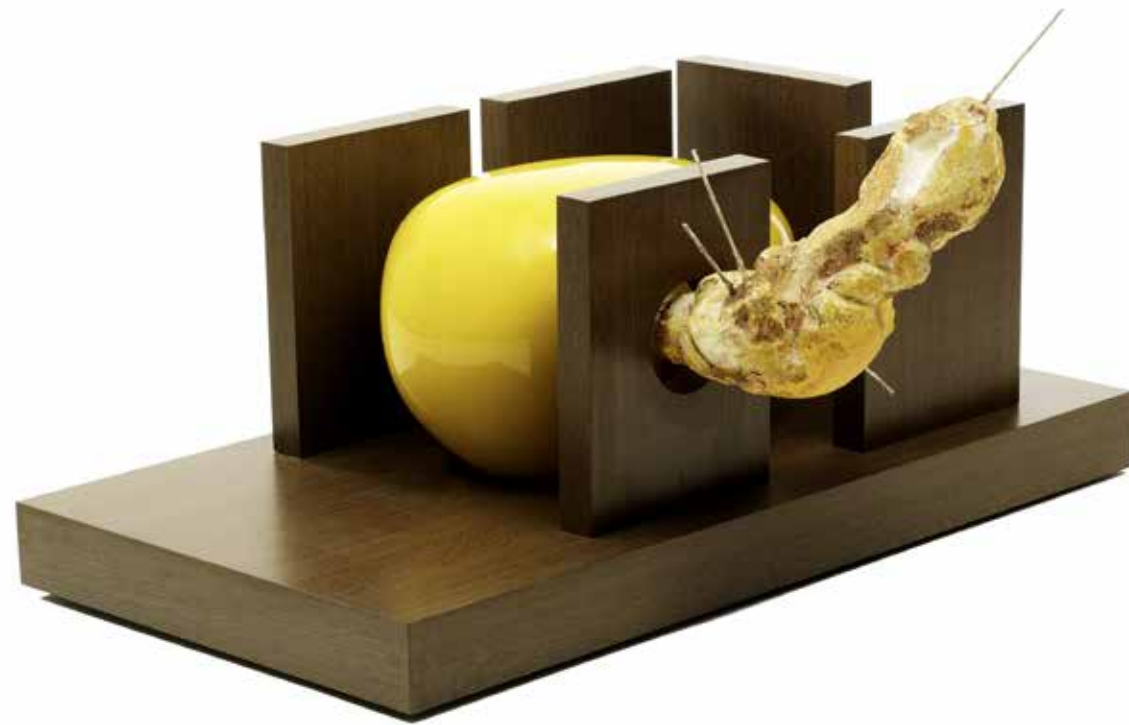
90

ED ORBICU, 2005
print
45 x 85 cm, framed 69 x 109 cm
17.7 x 33.5 inches, framed 27.2 x 42.9 inches

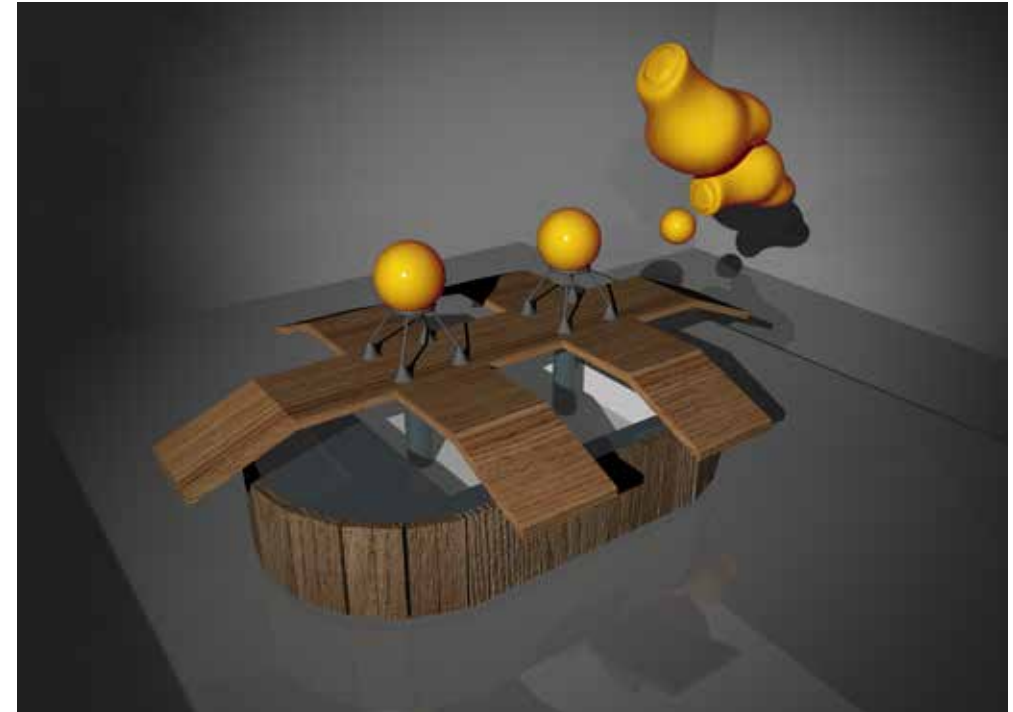


91

GNI_D_GH_79_dec2003, 2003
print
80 x 110 cm, framed 104 x 134 cm
31.5 x 43.3 inches, framed 40.9 x 52.8 inches



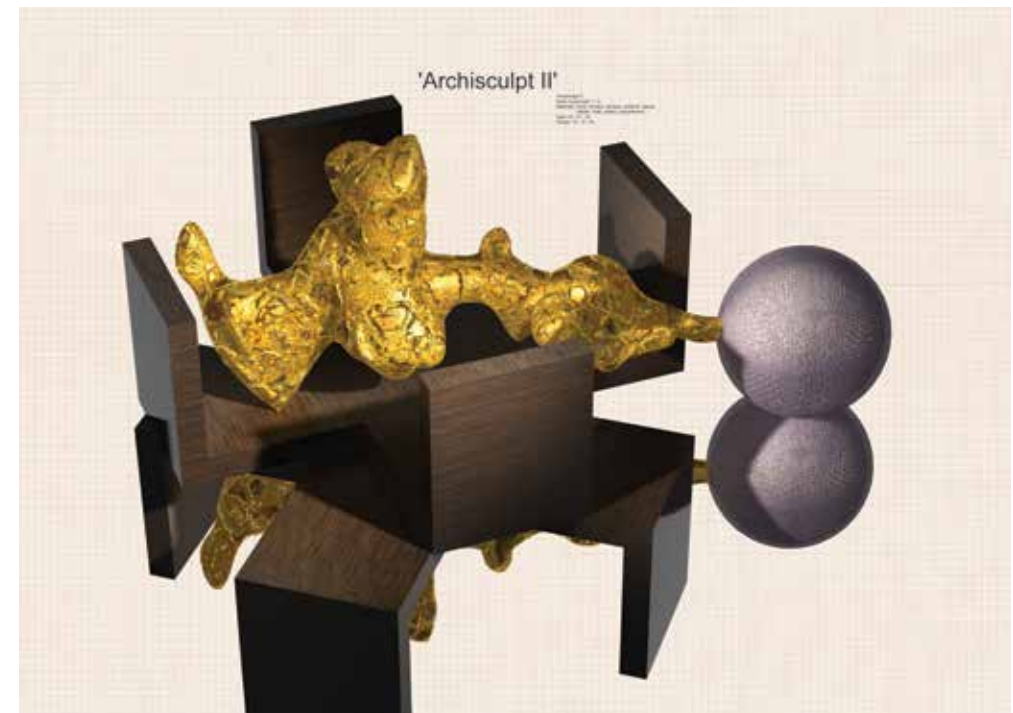
ARCHISCULPT V, 2005
 chalk, gauze, iron, plaster, plastic, styrofoam and wood
 104 x 185 x 142 cm
 40.9 x 72.8 x 55.9 inches



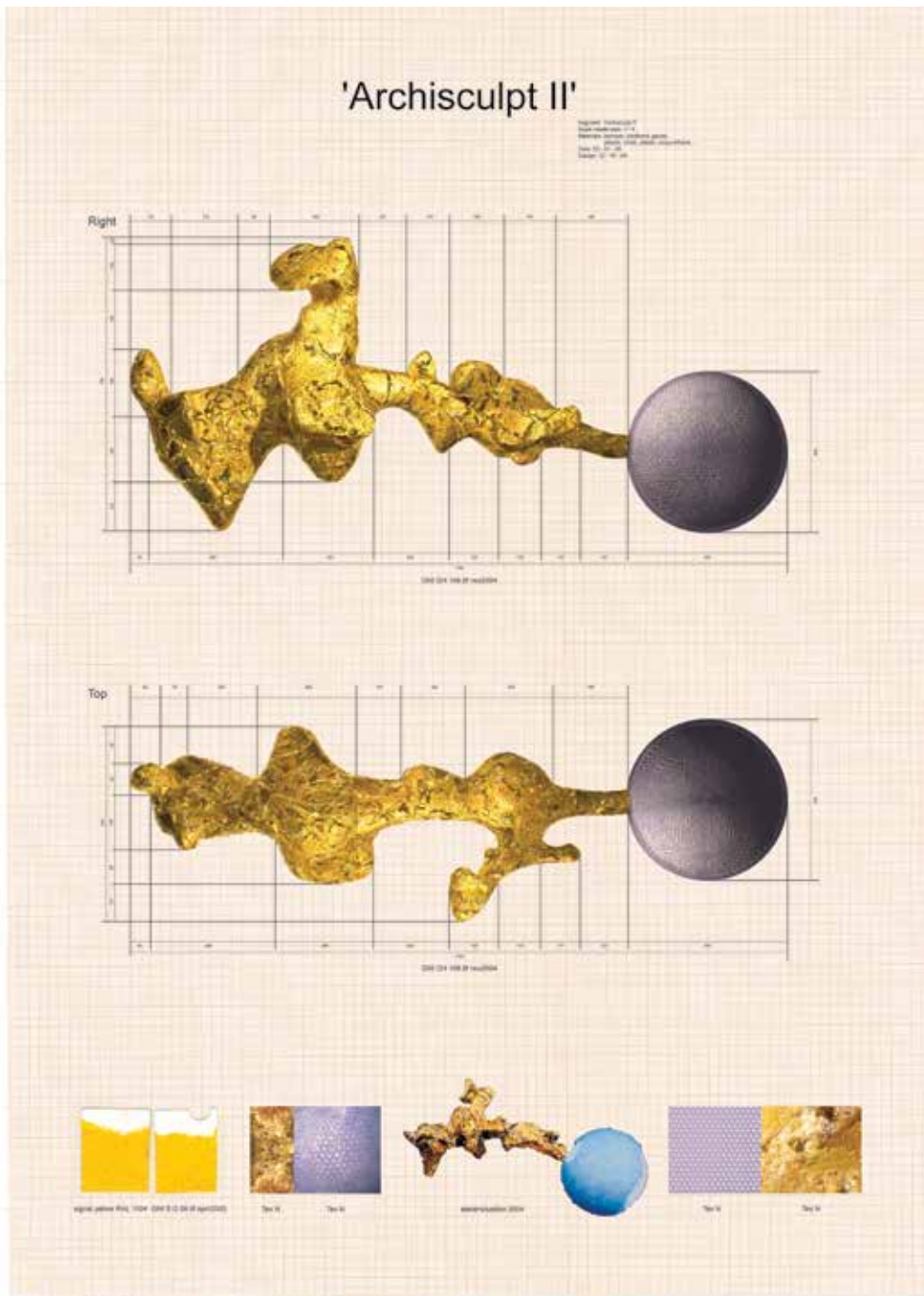
GNI_D_GH_30_may2004, 2004
 print
 60 x 84 cm, framed 84 x 108 cm
 23.6 x 33.1 inches, framed 33.1 x 42.5 inches



ARCHISculpt VI, 2005
chalk, gauze, iron, plaster, plastic, styrofoam and wood



ARCHISculpt II, 2005
print
50 x 70 cm, framed 70 x 90 cm
19.7 x 27.6 inches, framed 27.6 x 35.4 inches



ARCHISCULPT II, 2005
 print
 70 x 51 cm, framed 94 x 75 cm
 27.6 x 20.1 inches, framed 37 x 29.5 inches



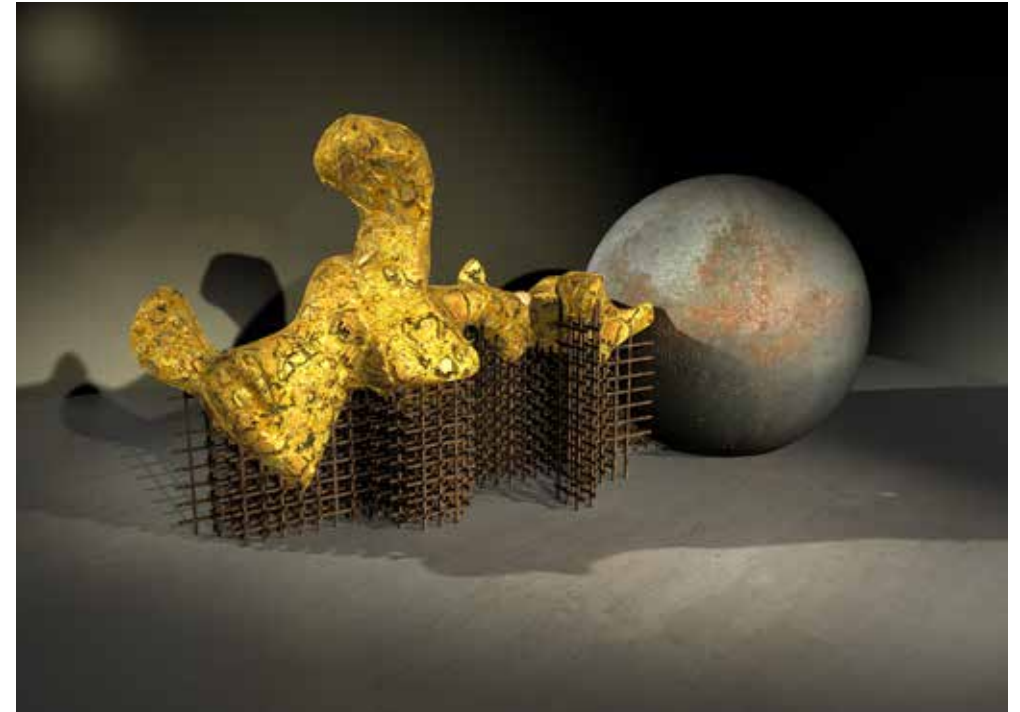
ARCHISCULPTOBS, 2004 - 2008
 polyester, polyurethane and wood
 33 x 65 x 18 cm
 13 x 25.6 x 7.1 inches



ARCHISCULPTOBSY, 2005
polyester and polyurethane
49 x 52 x 20 cm
19.3 x 20.5 x 7.9 inches



ARCHISCULPT, 2004 - 2005
 iron, plastic, polyester and wood
 33 x 65 x 18 cm
 13 x 25.6 x 7.1 inches



GNI_D_GH_26_nov2004, 2004
 print
 60 x 85 cm, framed 84 x 109 cm
 23.6 x 33.5 inches, framed 33.1 x 42.9 inches



102

ILLUSCULPT, 2005
print and wood
90 x 188 x 65 cm
35.4 x 74 x 25.6 inches

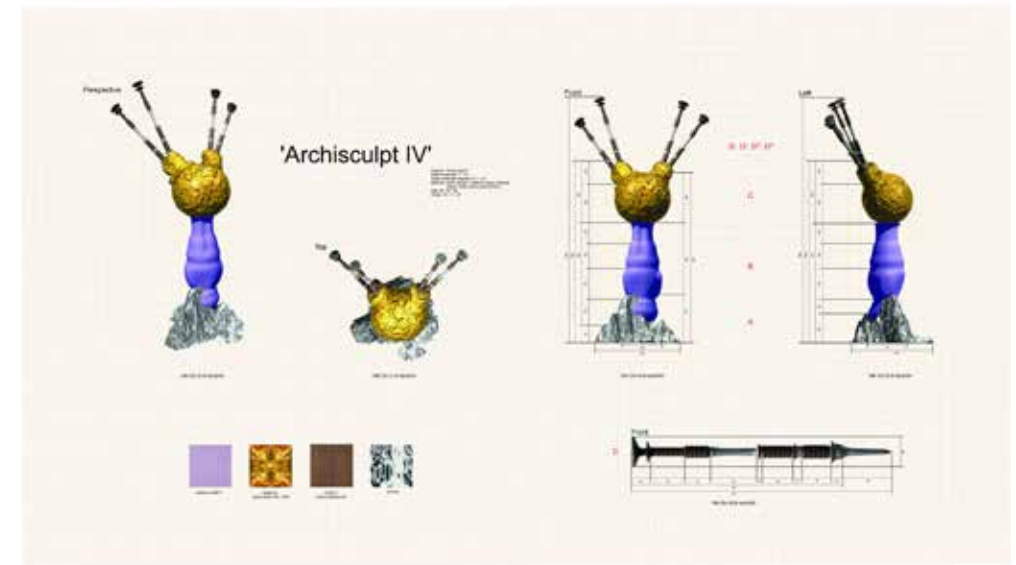


103

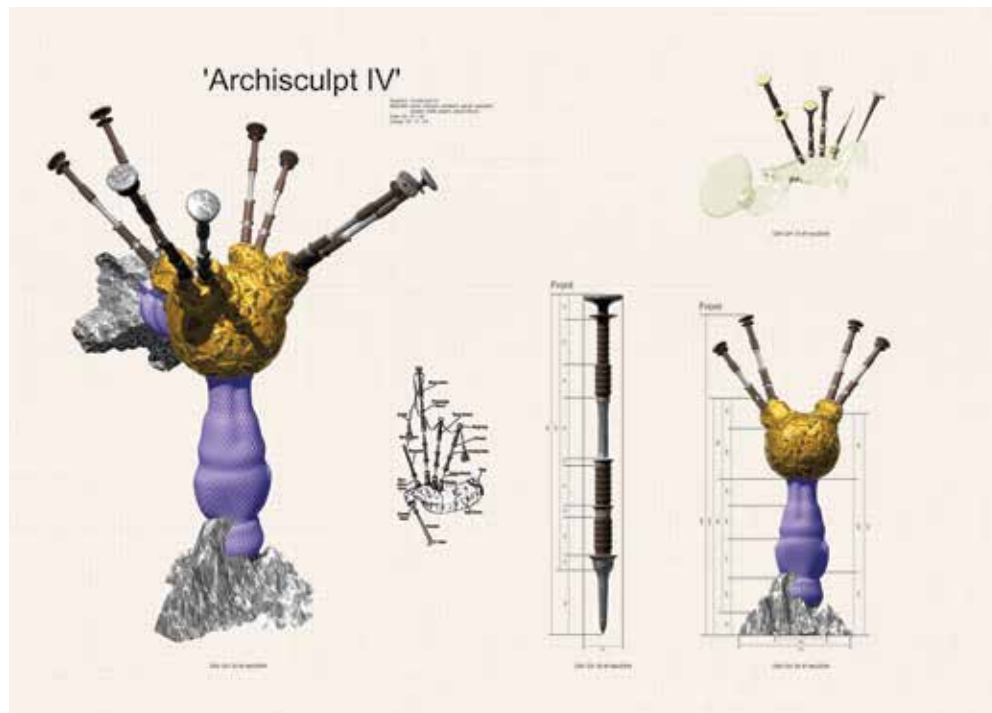
GNI_D_GH_15_dec2004, 2004
print
60 x 85 cm, framed 84 x 109 cm
23.6 x 33.5 inches, framed 33.1 x 42.9 inches



ARCHISCULPT_III, 2004
chalk, chardboard, formica, gauze, plaster, plastic and wood
75 x 205 x 178 cm
29.5 x 80.7 x 70.1 inches



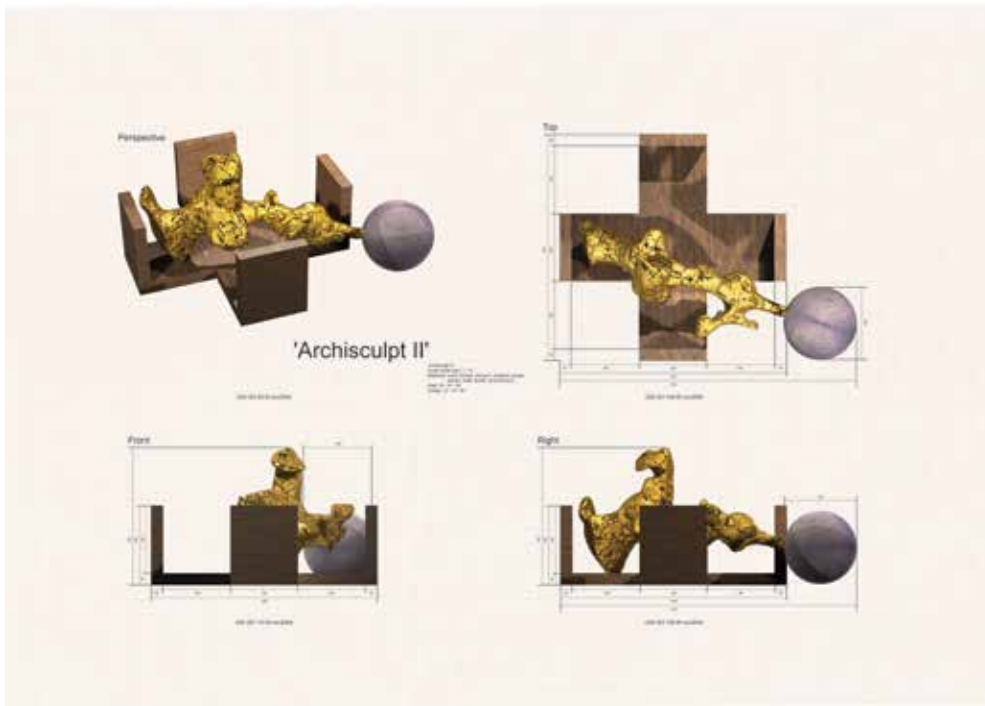
ARCHISCULPT_IV, 2005
print
50 x 90 cm, framed 70 x 110 cm
19.7 x 35.4 inches, framed 27.6 x 43.3 inches



ARCHISCULPT_IV, 2005
 print
 50 x 70 cm, framed 74 x 94 cm
 19.7 x 27.6 inches, framed 29.1 x 37 inches



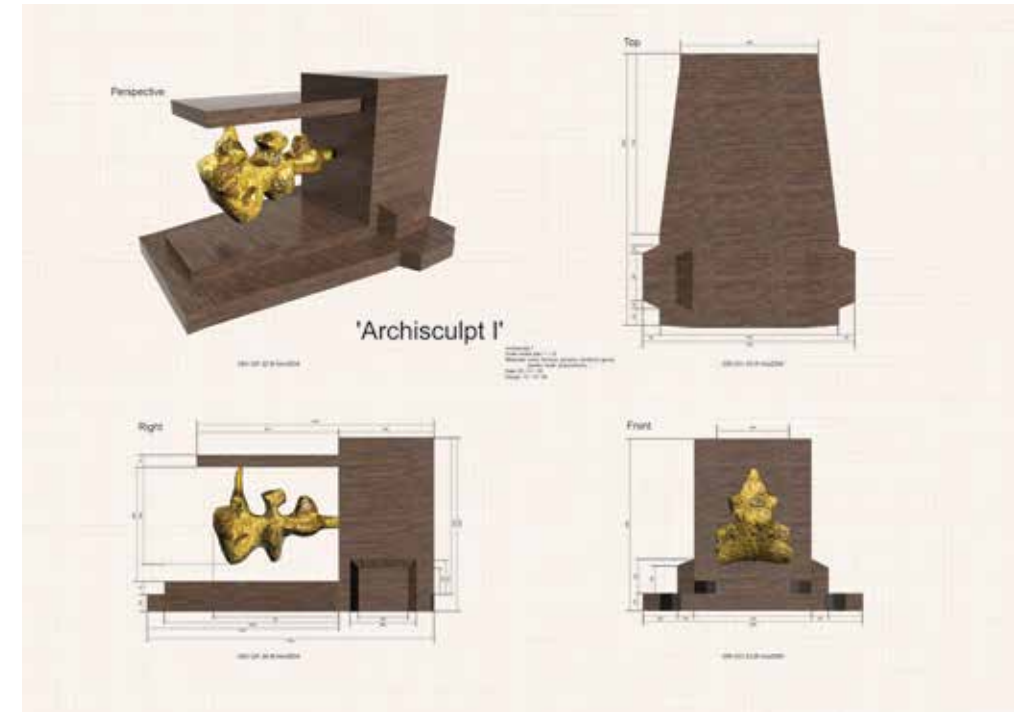
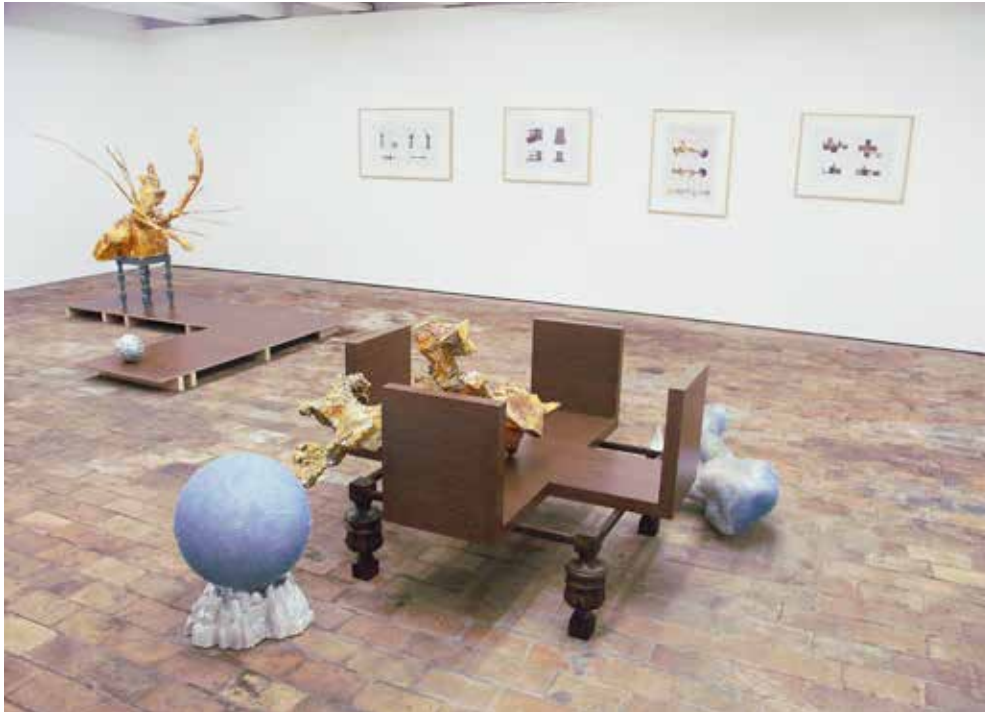
ARCHISCULPT_II, 2005
 chalk, chardboard, formica, gauze, plaster, plastic and wood
 75 x 205 x 178 cm
 29.5 x 80.7 x 70.1 inches



ARCHISCULPT_II, 2005
 print
 50 x 70 cm, framed 70 x 90 cm
 19.7 x 27.6 inches, framed 27.6 x 35.4 inches



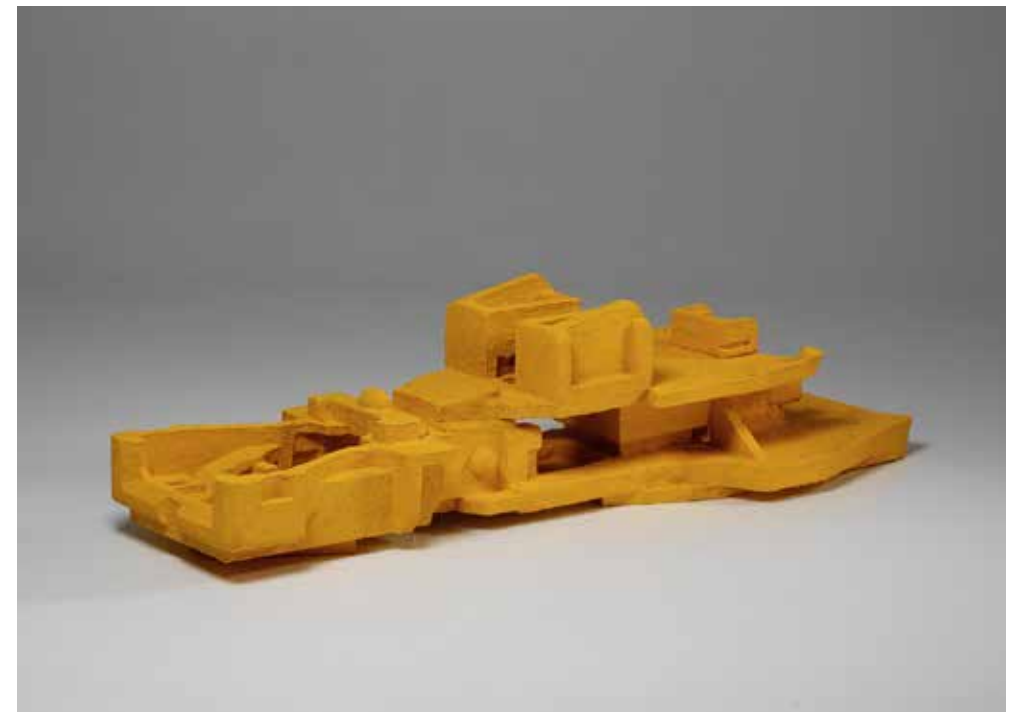
exhibition view: 2005 Suger-free, Netwerk – Aalst, BE





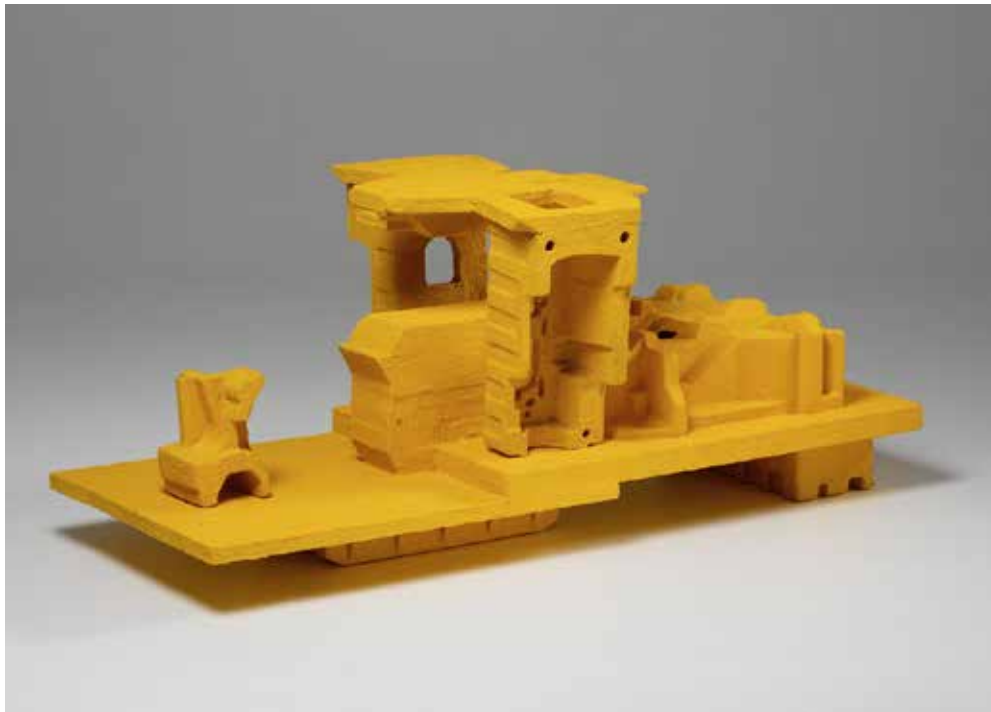
112

ARCHISCULPT_I, 2005
chalk, chardboard, formica, gauze, plaster and wood
130 x 165 x 100 cm
51.2 x 65 x 39.4 inches



113

GNIURKS II, 2002
chalk, gauze, plaster, polyester, styrofoam and wood
45 x 70 x 190 cm
17.7 x 27.6 x 74.8 inches





116



117

exhibition view: 2008 GNI-RI feb2008, Benedengalerie – Kortrijk, BE

GNIURKS M, 2002
chalk, gauze, plaster, polyester, styrofoam and wood
2x 80 x 82 x 60 cm
2x 31.5 x 32.3 x 23.6 inches



118

GNIURKS, 2008
print
50 x 100 cm, framed 74 x 124 cm
19.7 x 39.4 inches, framed 29.1 x 48.8 inches



119

GNIURKS S, 2002 - 2008
3D print
18 x 23 x 23 cm
7.1 x 9.1 x 9.1 inches



GNIURKS IV, 2003
chalk, gauze, iron, plaster and styrofoam



GNIURKS L, 2002
chalk, gauze, plaster, polyester, styrofoam and wood
210 x 210 x 135 cm (13 parts variable placing)
82.7 x 82.7 x 53.1 inches

Text: Studio Nick Ervinck
Graphic concept: Studio Nick Ervinck
Photocredits: Luc Dewaele, Peter Verplancke, Bob Van Mol and Studio Nick Ervinck

© Studio Nick Ervinck
www.nickervinck.com
www.nikipedia.be

